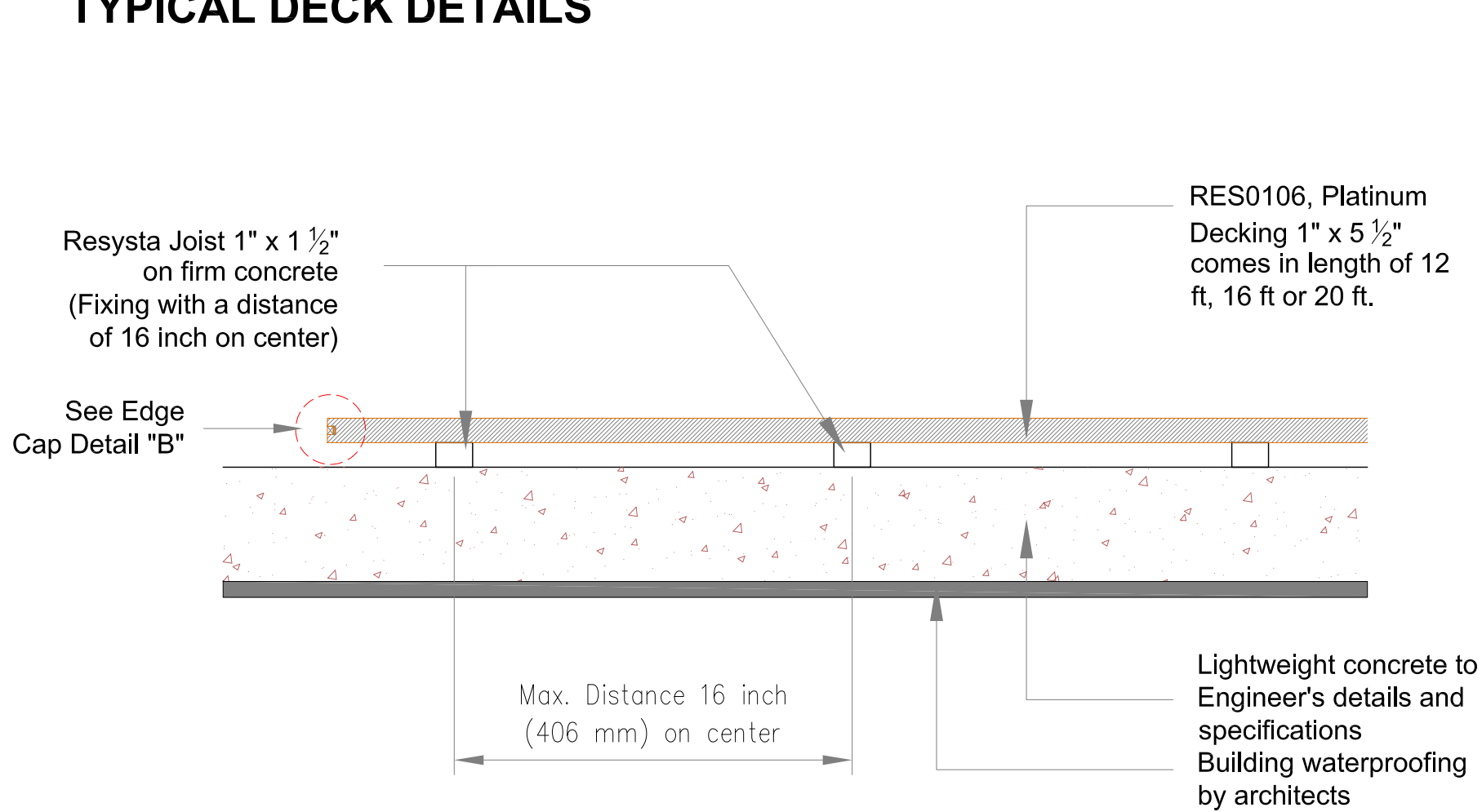
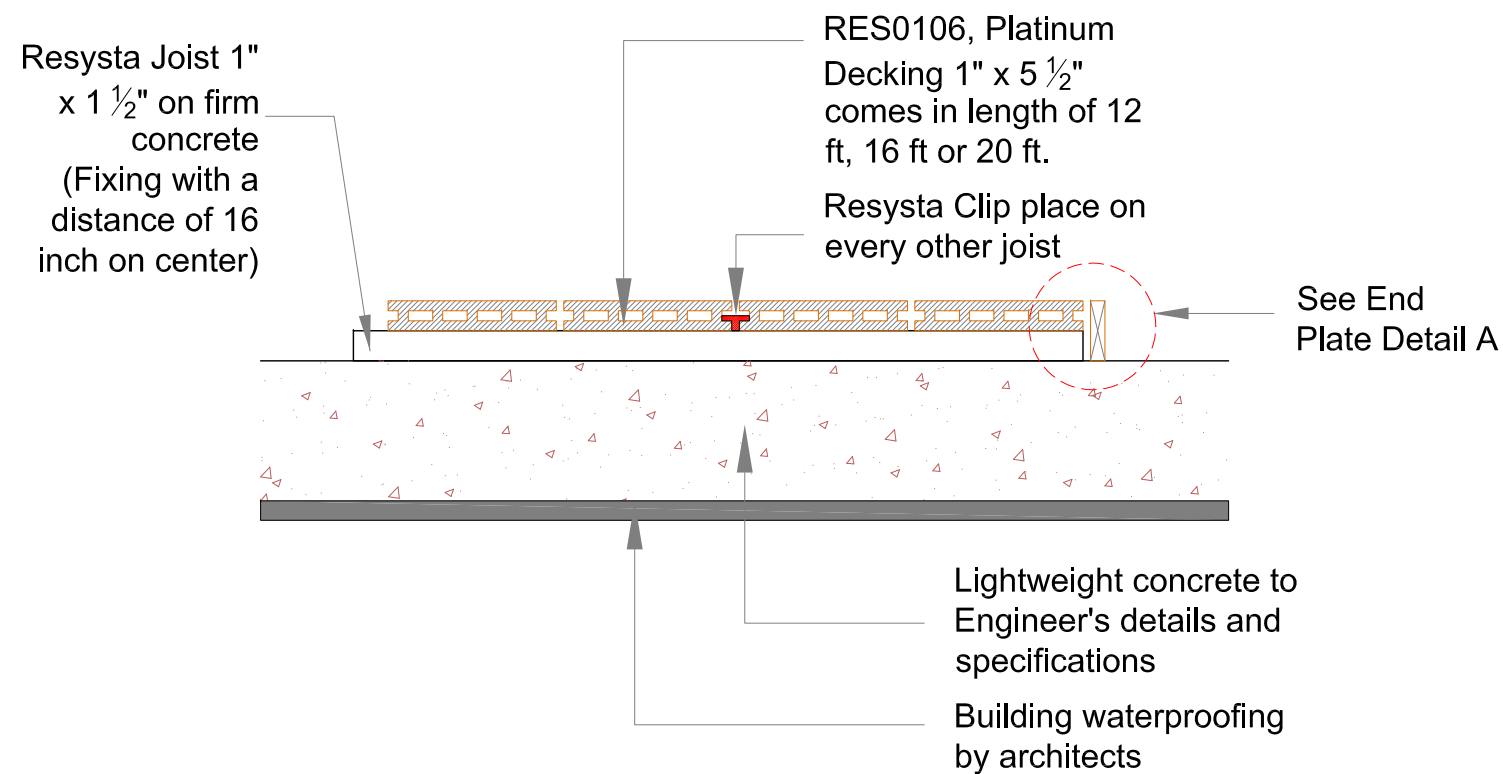


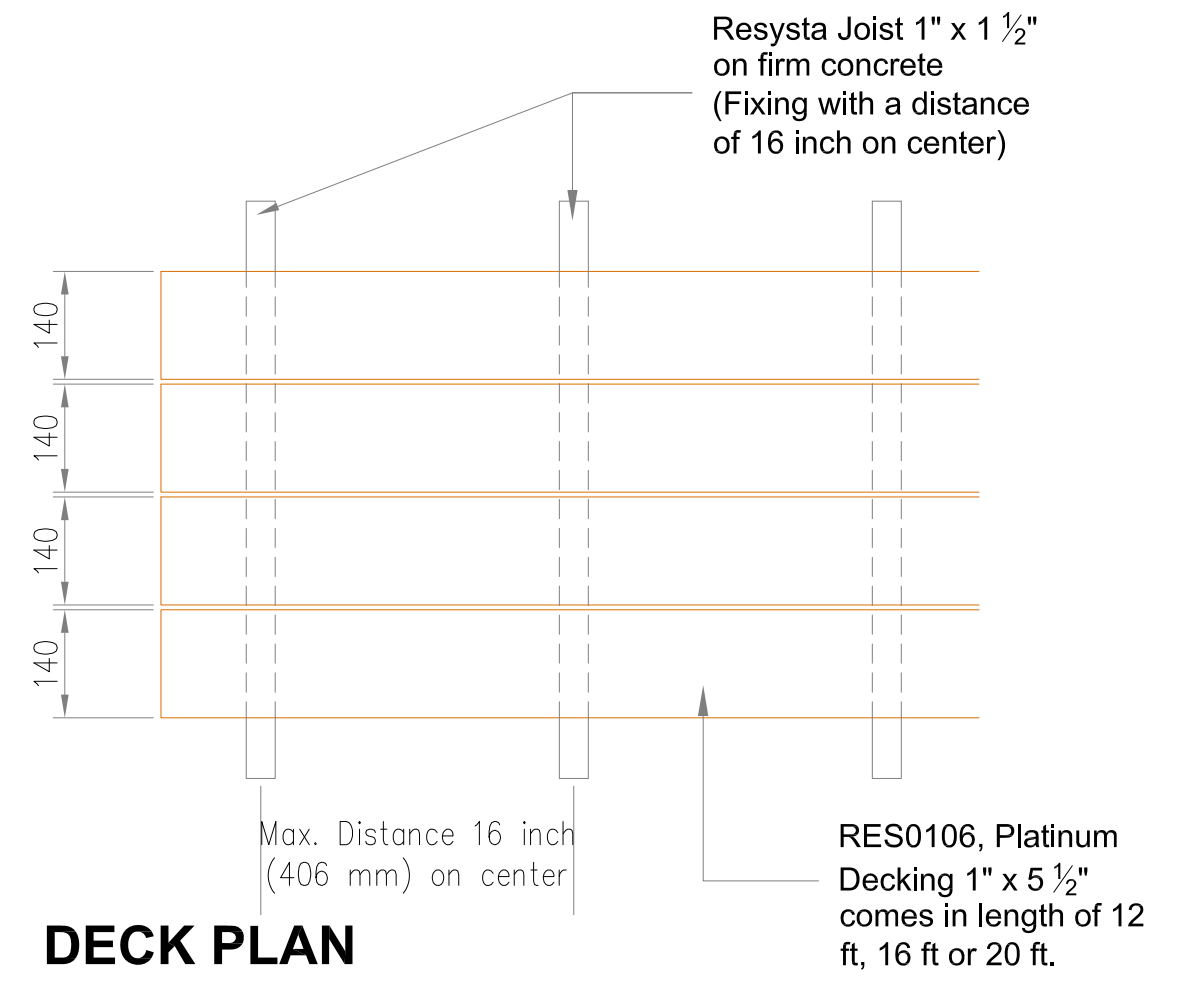
TYPICAL DECK DETAILS



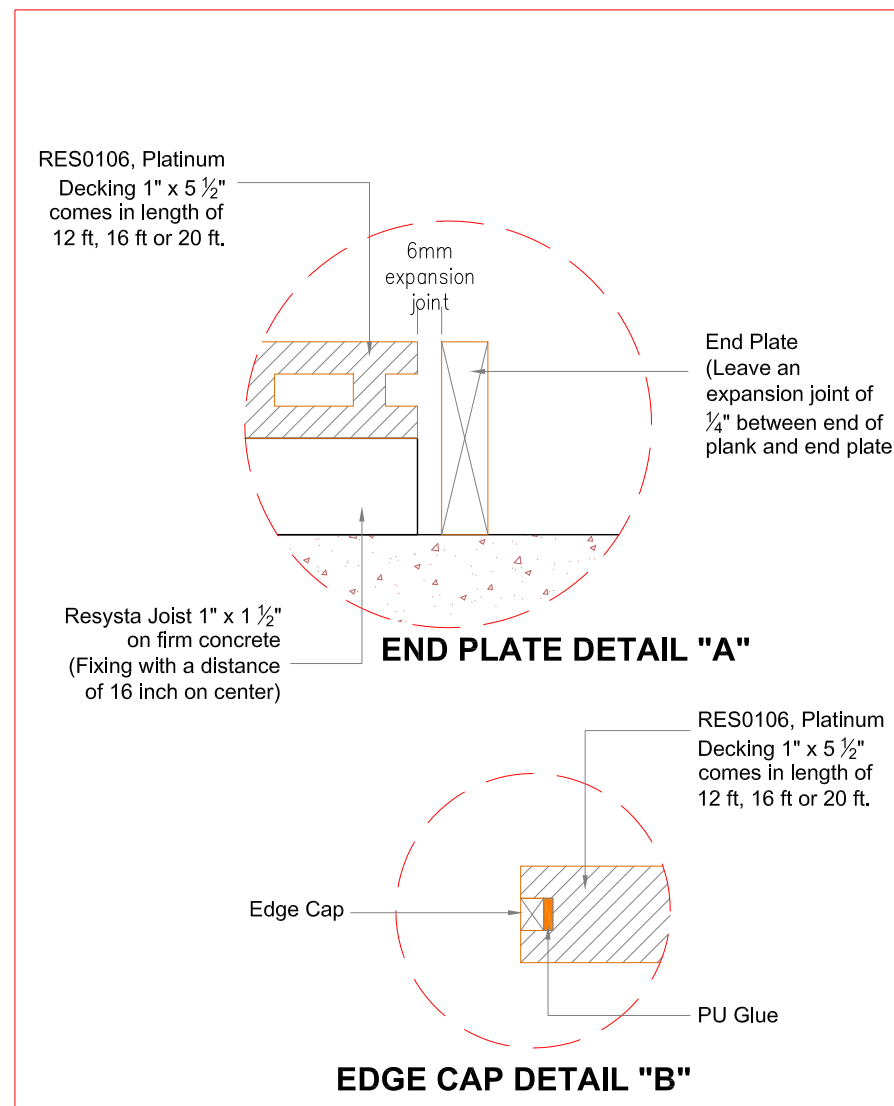
LONGITUDINAL SECTION



CROSS SECTION



DECK PLAN



- NOTE:**
- Ensure firm soil an adequate water drainage
 - Firmly support all joists above soil
 - In case the joists cannot be firmly screwed with the ground (e.g. roof coating), sufficient fixing of the whole decking needs to be ensured (please clarify details with your architect)



Providing Architects and Builders with
Superior Paving, Decking and Pedestal Products.

Commercial | Luxury Residential | Municipal

Extended Team

We can also provide technical consultation and installation training for projects that involve Buzon Pedestals. Please contact us to discuss your particular needs. HDG Building Materials also has a network of experienced installers in many major cities. Please contact us for introductions or referrals.

Sales Representatives

Sales representatives for HDG Building Materials are located in the Pacific Northwest, Southern California, and Iowa.

Outside of those regions? No problem, we are happy to serve. Please contact us at 503.360.9551



HDG Building Materials
Commercial | Luxury Residential | Municipal

5317 NW Goodwin Loop
Camas, WA 98607

HDG Building Materials is an expert dealer for Resysta Rainscreen, Cladding, and Decking. HDG provides architectural sales and support in North America.

503.360.9551

sales@hdgbuildingmaterials.com