

2016

Thermory® is not for everyone,
but for those who appreciate
a distinguished exterior hardwood,
it has no equal.



• Thermo-ash decking
• Avocado Acres (Aa) House, Encinitas, California
• Surfside Projects, LLC. (SurfsideProjects.com)
• Architect: Lloyd Russell



thermal modification

Process

- Process uses only heat and steam (no chemicals)
- Heated to approx 400°F
- Equalized at 6% moisture content
- Adjusts cell structure

Responsibility

- Chemical-free thermal modification process
- Sourced from well-managed American & European forests
- No rainforest wood

North American White Ash

- Harder than Red Oak
- Used to make baseball bats

Proven Technology

- Perfected European thermo-treatment technology
- In use for over 17 years worldwide
- Over 100 million square feet in existing applications

- Thermo-pine cladding, decking, roofing
- Project "Waterfront," Norway
- WAN Residential Award 2014
- AART Architects

benefits

Color & Beauty

- Exotic brown color through full thickness
- Naturally ages to a rich platinum gray
- Preserve original exotic brown with UV protectant oil
- Variations in color are natural

Durability

- Removes wood sugars to give 25+ years of resistance to rot & decay (Class 1 durability)
- Fire-rated & Calfire-WUI approved

Stability

- 7X less likely to warp, check, bow, cup, twist, expand, or contract
- Exceeds stability standards and relative humidity ASTM testing

Useability

- Easy on tooling
- Smooth & splinter-free
- Lighter weight
- Machines beautifully
- Non-toxic dust
- Disperses heat (No hot feet!)



- Thermo-pine cladding
- Felleskjøpet Headquarters, Norway
- Architect: Snøhetta



- Thermo-ash decking
- Private residence, Beverly Hills, CA



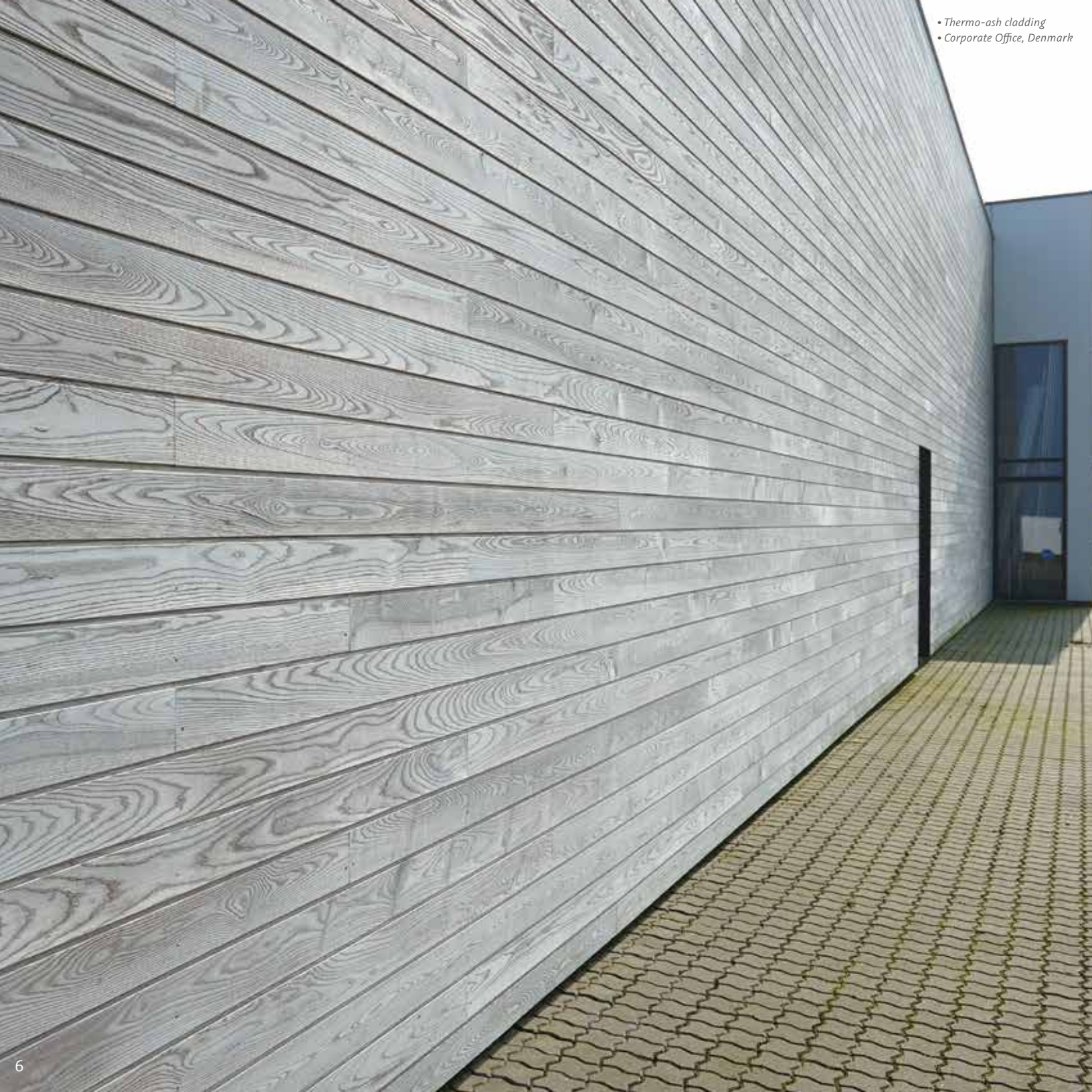
sustainable luxury

Thermory® products are unrivaled in environmental responsibility. Thermory® is the industry leader in thermal modification, and invests in the latest thermo-treatment technology, manufacturing and installation techniques. Thermory® has developed an environmentally responsible solid hardwood product that delivers luxury and outperforms the finest tropical woods.

- 100% harvested from sustainable, renewable, North American & European forests
- Chemical-free process
- Responsible, yet sophisticated alternative to exotics



- Thermo-ash decking
- Private residence, Italy



• Thermo-ash cladding
• Corporate Office, Denmark



• Thermo-ash decking
• School Yard, Denmark

aged/untreated color specs
platinum gray

• Naturally ages to a rich platinum gray



• Thermo-ash cladding
• Pool house, Belgium

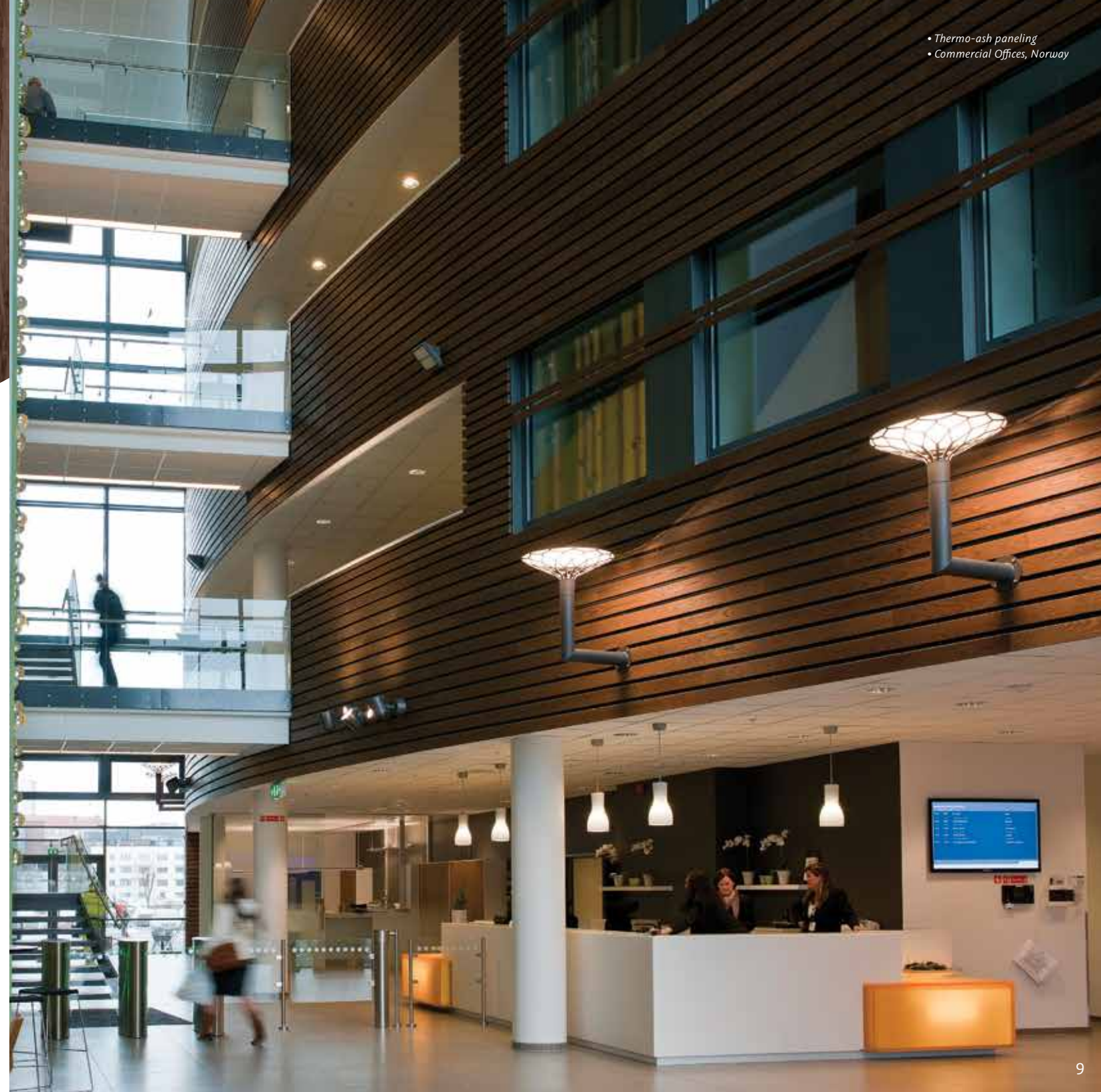
color specs

exotic brown

- Warm, rich, exotic brown through full thickness
- Preserve brown with UV protectant oil



• Thermo-ash decking
• Private Residence, Toronto



• Thermo-ash paneling
• Commercial Offices, Norway

tech specs decking

Thermory® Hidden Clip System Installation

- Stainless steel hardware
- Perfect spacing and quick installation
- Machined side grooves for fasteners

Traditional Installation

- Face screw with Stainless Steel Sihga Screws** (pre-drilling not required)

Maintenance

- Minimal (naturally ages to a rich platinum gray)
- Or use UV protectant oil to maintain exotic brown

Grade/Standard Sizes*

- clear, straight and flat
- Grooved for hidden fasteners or non-grooved
- 5 -7% wider than standard, more coverage per lineal foot

| | | | |
|-------|------------|---------|-------------|
| 1 x 4 | .79 x 3.7" | 5/4 x 4 | 1.02 x 3.5" |
| 1 x 6 | .79 x 5.9" | 5/4 x 6 | 1.02 x 5.7" |

Thermory® Slim (for EB-TY® Clips) 5/4 x 6 1.02" x 5.1"



*Specifications are subject to change w/o notice.

**See manual for detailed installation guides.

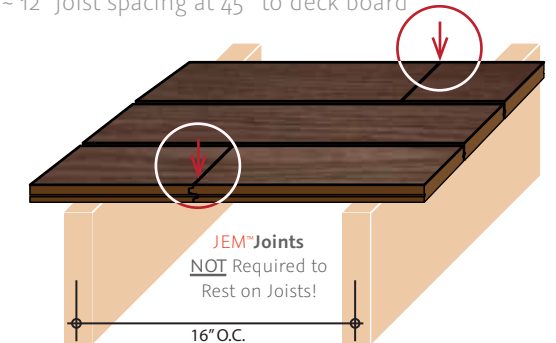
- Thermo-ash decking
- ZEB Pilot House, Norway
- WAN Sustainable Building Award 2015
- Snøhetta Architects



Joint End Matched JEM™ Joint

- NOT required to rest on joists!
- Reduced waste (98% Yield)
- Reduced labor costs (less cutting/measuring)
- Bending strength exceeds deflection code requirements based on ASTM testing

- ~ 16 " joist spacing at 90° to deck board
- ~ 12" joist spacing at 45° to deck board



no pre-drilling Hidden Clips

- Ensures perfect-spacing
- Stainless steel hardware
- Machined side grooves for hidden clips
- No pre-drilling needed during installation



tech specs cladding

Thermory® PaCS™ System Installation (Press and Click Strip)

- Cladding boards are pre-grooved for PaCS™ System
- Incomparably fast installation

JEM™ Joints

- NOT required to rest on furring strips or PaCS™ Strip
- Reduced waste (98% Yield)
- Accelerated installation speed (less cutting/measuring)

Traditional Installation

- Stainless Steel Sihga Screws (pre-drilling not required)

Maintenance

- Minimal (naturally ages to a rich platinum gray)
- Or maintain exotic brown with standard UV protectant oil

Grade

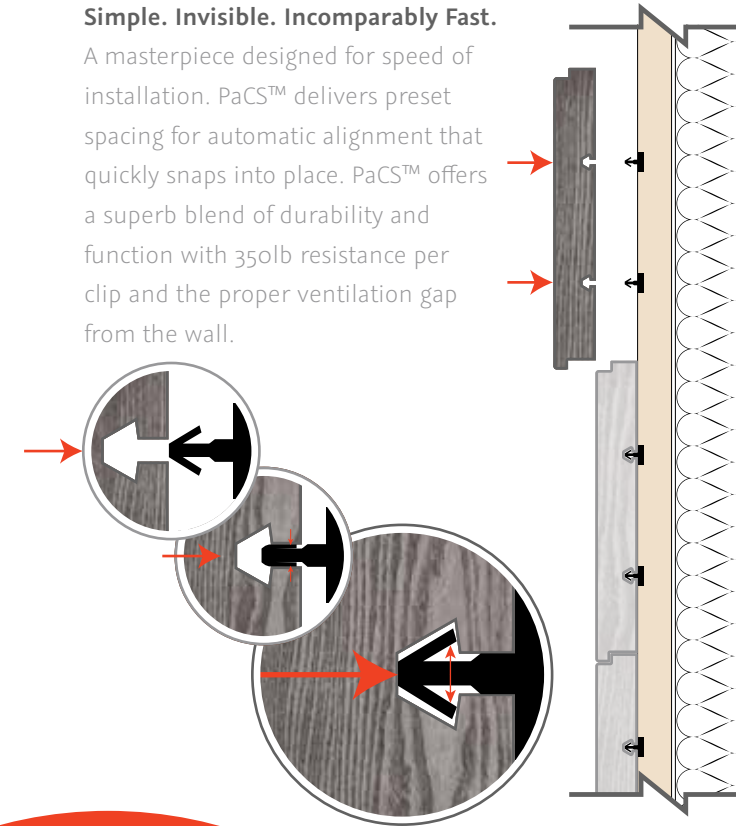
- clear, straight and flat



Press and Click Strip cladding system

Simple. Invisible. Incomparably Fast.

A masterpiece designed for speed of installation. PaCS™ delivers preset spacing for automatic alignment that quickly snaps into place. PaCS™ offers a superb blend of durability and function with 350lb resistance per clip and the proper ventilation gap from the wall.



- Thermo-pine cladding, decking, roofing
- Project "Waterfront," Norway
- WAN Residential Award 2014
- AART Architects





• Thermo-ash porch flooring
• Private Residence, Las Vegas

tech specs

porch flooring

Traditional Tongue & Groove Installation:

- Standard edge fastening at angle through tongue
- 60mm Stainless steel Sihga screws recommended

JEM™ Joints

- JEM™ Joints NOT required to rest on joists!
- Reduced waste (98% Yield)
- Accelerated installation speed (less cutting/measuring)
- Bending strength exceeds deflection code requirements based on ASTM testing
~ 12", 16 " or 24" joist spacing

Maintenance:

- Minimal (naturally ages to a rich platinum gray)
- Or maintain exotic brown w/ standard UV protectant oil

Grade/Sizes*

- Clear face ~ .79 x 3.54" coverage
- ~ 1.02 x 3.54" coverage
- ~ 6' -12' Random** lengths

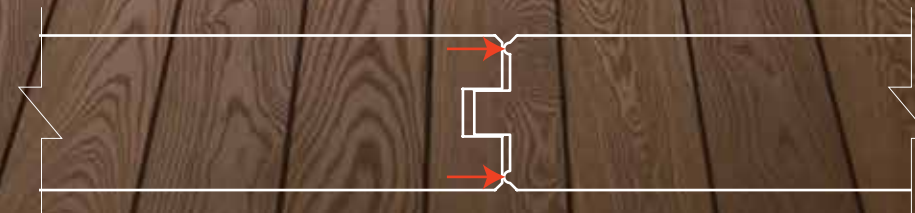
warp minimizing

Expansion Beads™

Thermory's® Expansion Beads™ are designed to minimize warping and buckling by compensating for environmental stresses related to moisture.

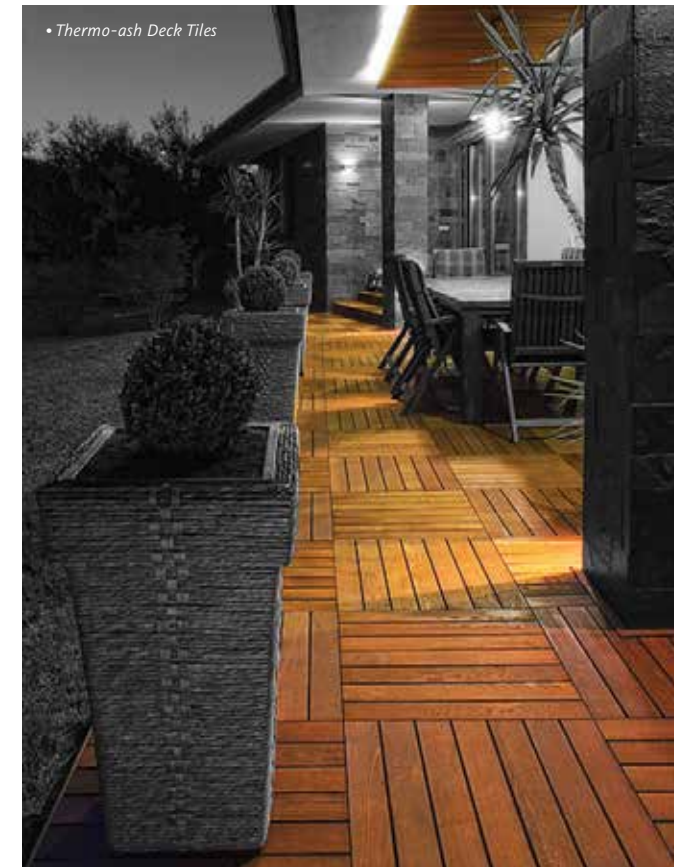


*Specifications are subject to change w/o notice.





• Thermo-ash decking
• Spa, Bulgaria



• Thermo-ash Deck Tiles

boundaries broken. full potential unleashed.

innovation

Thermory® supports artisans with a passion for the unexpected. With an unmatched flexibility in applications and a sophisticated look that complements projects ranging in style from classic to modern, Thermory® is the exterior hardwood of choice for the most ingenious designers and architects. Applications are limitless, including:

- Decking
- Cladding
- Interior Flooring
- Fencing
- Porch Flooring
- Deck Tiles
- Sauna Components
- Site Furniture Components



• Thermo-ash
• Shower-room project, Toronto
• Hardcore Renos





THERMORY®

Excellence in Wood

decking • cladding • porch flooring

ThermoryUSA.com

chicago

support@thermoryusa.com

P: 847.256.8828 • F: 847.256.0509

1213 Wilmette Avenue, Suite 208

Wilmette, IL 60091

buffalo

support@thermoryusa.com

P: 585.250.4074 • F: 847.256.0509

14 Jackson Square, Unit #5

Batavia, NY 14020



Providing Architects and Builders with
Superior Paving, Decking and Pedestal Products.

Commercial | Luxury Residential | Municipal

Extended Team

We can also provide technical consultation and installation training for projects that involve Buzon Pedestals. Please contact us to discuss your particular needs. HDG Building Materials also has a network of experienced installers in many major cities. Please contact us for introductions or referrals.

Sales Representatives

Sales representatives for HDG Building Materials are located in the Pacific Northwest, Southern California, and Iowa.

Outside of those regions? No problem, we are happy to serve. Please contact us at 503.360.9551



THERMORY
Excellence in Wood

HDG Building Materials is an authorized dealer
for Thermory and is the national distributor
for Thermory Pavers.

HDG Building Materials
Commercial | Luxury Residential | Municipal

10691 SE Jason Lane
Happy Valley, OR 97086

503.360.9551

sales@hdgbuildingmaterials.com