



Providing Architects and Builders with  
Superior Paving, Decking and Pedestal Products

Commercial | Luxury Residential | Civic

## HDG GRATING PANELS

A close-up photograph of HDG Grating Panels. The image shows a dark gray, textured surface with a grid of square openings. The panels are made of fiberglass reinforced plastic (FRP). In the foreground, a circular pedestal is visible, with a grating panel mounted on top. The pedestal has several circular holes and a central opening. The grating panel is secured to the pedestal with a green screw. The background shows more of the grating panels, creating a sense of depth and texture.

### HDG Grating Panels

HDG Grating Panels are molded grating products made of fiberglass reinforced plastic (FRP). Available in a variety of resins, standard and custom colors, depths, panel sizes and mesh configurations. Surface options include a meniscus or integrally applied grit top, both of which offer superior, slip resistant footing. Grating can also be mechanically fastened to the tops of Buzon pedestals.

### Featured Product

HDG Mini-Mesh, 4x12' FRP ADA-Rated Grated Panel  
3/4" Square Top Mesh  
1/2", 1" and 1-1/2" Depth



# HDG GRATING PANELS



## HDG Grating Panels Offer Significant Benefits Compared to Steel Grating or Decking:

- Corrosion resistant
- Low maintenance
- Slip resistant
- Long service life
- High strength
- Lightweight
- Impact resistant
- Non-Conductive
- Fire retardant
- Ergonomic
- UV Resistant
- ADA Compliant



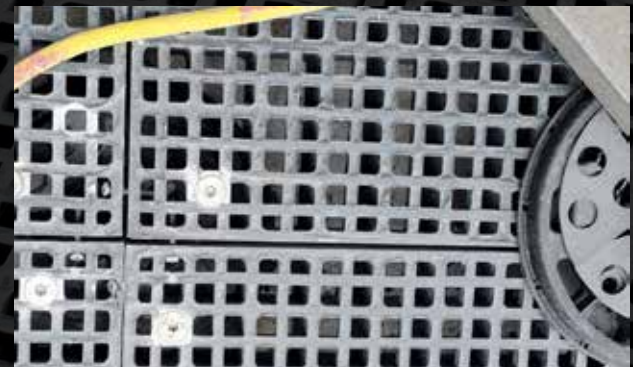
## Why Use HDG Grating Panels?

- Comply with the Americans with Disabilities Act (ADA) guidelines
- Replace metal grating for corrosion related maintenance problems
- Minimize vibration from rolling cart or wheelchair traffic
- Create a low cost alternative where subfloor access and unobstructed air flow is required
- Provide ready access to electrical conduits, air supply plenums, and service lines
- Have rapid efficient drainage for regular cleaning
- Pass light, air, or water while maintaining structure



## Affix HDG Grating Panels to Buzon Pedestals to:

- Span uneven or cracked floors
- Further stabilize Buzon's tallest adjustable pedestal system (up to 44")
- Re-define the structural platform below pavers (such as 2cm porcelain pavers)
- Solve unique design problems
- Create a raised accessible floor to protect hydraulic lines, electrical connections, water, cooling water and irrigation lines, compressed air piping, chemical feeds, etc.



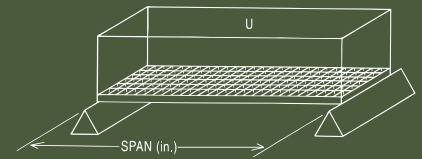
HDG Countersunk Flush-Mount Fasteners used to Secure HDG Grating Panels to Buzon Pedestals

## HDG Grating Panels Loading Specification

For 1-1/2 deep x 1-1/2 x 1-1/2 square top mesh grating (4'x12') panels

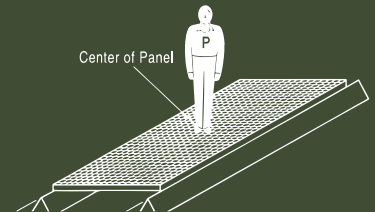
\*Also represents load data for Mini-Mesh 1-1/2" deep x 3/4" square top mesh grating (4' x 12') panel.

\*\*Buzon pedestals are typically set on a 24x24" grid-pattern underneath the 1-1/2" deep HDG Mini-Mesh Grating Panels.



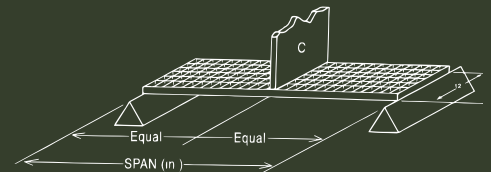
### MOLDED GRATING UNIFORM LOAD ( Deflection in Inches )

CLEAR SPAN (in)	STYLE		LOAD (lb)									MAX RECOM. LOAD (psf)	ULTIMATE CAPACITY (psf)
	DEPTH (in)	MESH (in x in)	50	65	100	150	200	300	500	1000	2000		
24**	1-1/2*	1-1/2 x 1-1/2	0.02	0.03	0.04	0.06	0.08	0.12	0.21	0.42	--	800	4000



### MOLDED GRATING CONCENTRATED POINT LOAD ( Deflection in Inches )

CLEAR SPAN (in)	STYLE		LOAD (lb)						
	DEPTH (in)	MESH (in x in)	50	100	200	300	500	1000	2000
24	1-1/2*	1-1/2 x 1-1/2	<.01	0.01	0.02	0.03	0.06	0.12	0.23



### MOLDED GRATING UNIFORM LOAD ( Deflection in Inches )

CLEAR SPAN (in)	STYLE		LOAD (lb)							MAX RECOM. LOAD (psf)	ULTIMATE CAPACITY (psf)
	DEPTH (in)	MESH (in x in)	50	100	200	300	500	1000	2000		
24	1-1/2*	1-1/2 x 1-1/2	0.02	0.03	0.07	0.1	0.17	0.33	--	800	4000