



ACRE™ BY MODERN·MILL

INSTALLATION SPOTLIGHT

Board and Batten Applications





ACRE is a revolutionary material that offers the look and feel of wood, and it can be cut, curved, shaped and molded to fit countless applications, both exterior and interior.

ACRE's sheet and trim products can work together to create a classic "board and batten" siding profile to a home's exterior. While following the installation parameters listed below, installers can also create unique patterns and profiles to fit any home style and aesthetic desired.

Always check local building codes and best practices before getting started.

GETTING STARTED

Be sure to follow all best practices found in Modern Mill's ACRE Trim Installation Guide and ACRE Technical Brochure, including, and not limited to safety tips, personal protection equipment, and instructions for working with ACRE.

WE'RE HERE TO HELP.

Call us at 503-360-9551, or write to us at sales@hdgbuildingmaterials.com for assistance.

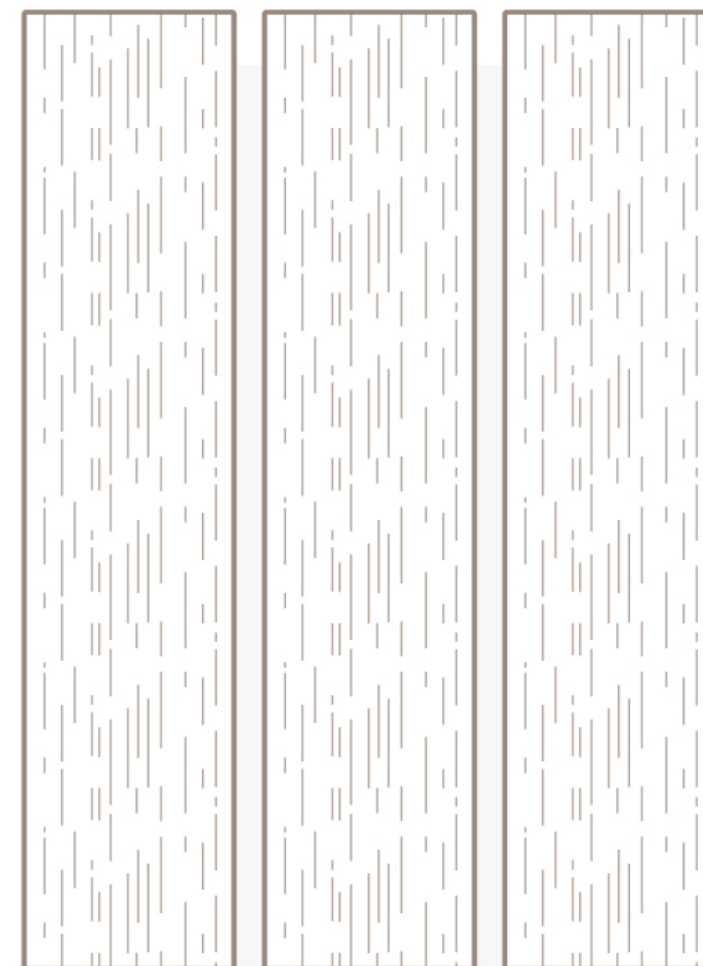
REQUIREMENTS BEFORE INSTALLATION

Board Options: 1/2" or 3/4" thickness | Sanded or Embossed

Batten Options: 1" x 2", 1" x 3", 5/4" x 2", or 5/4" x 3"

Begin with a solid substrate and a flat surface. We recommend a minimum thickness of 1/2 inch plywood or 7/16 inch OSB.

Prior to installing sheets, install house wrap, window tape and horizontal flashings over window and door openings and all other areas as defined by the building code.



BOARD LAYOUT

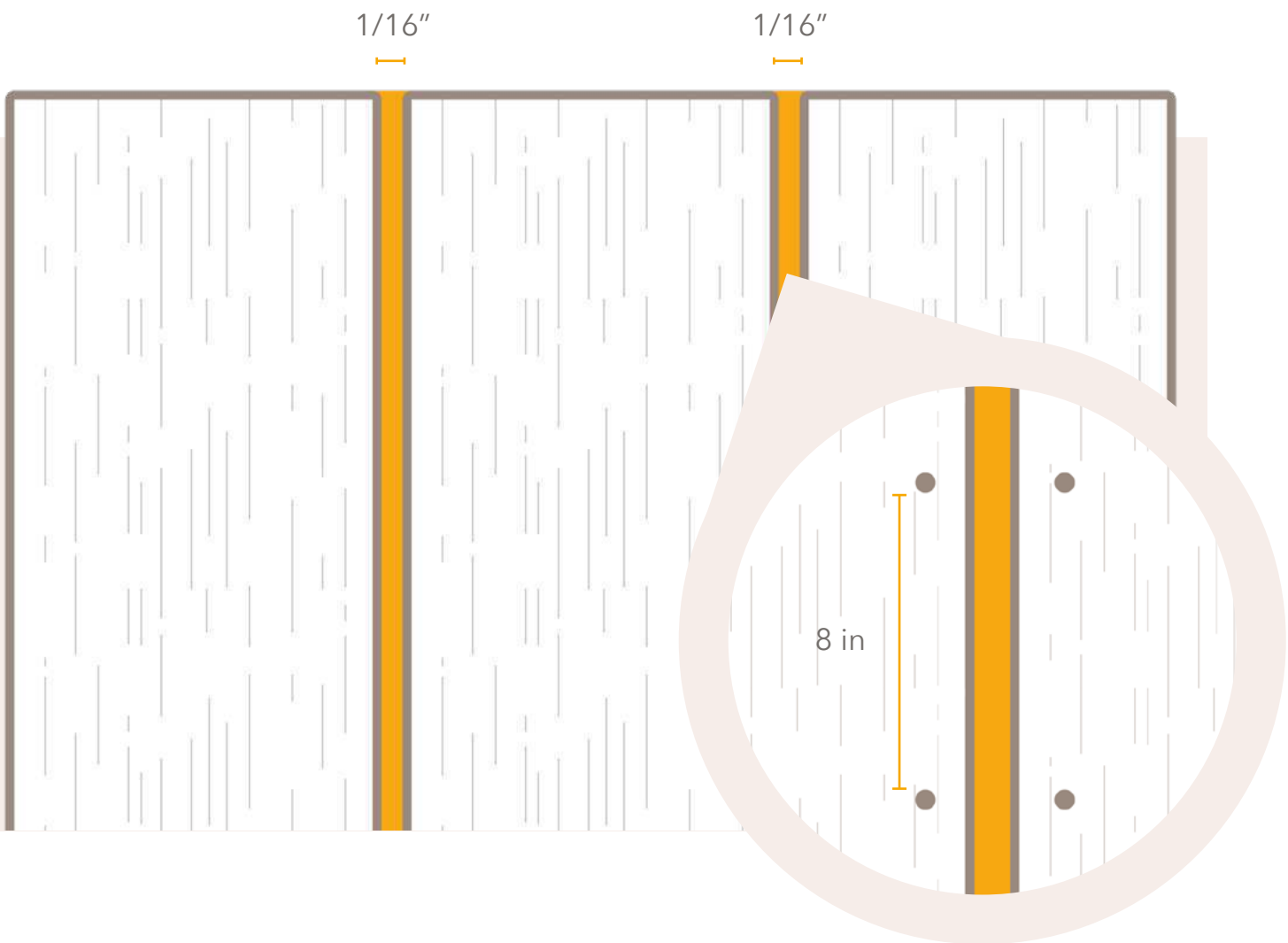
ACRE sheets should always be installed vertically and should not bridge floors. ACRE sheet goods are available in lengths of 8 foot to 20 foot, so choose or cut boards to correct lengths so that sheets break on the subfloor of each story.

INSTALLING BOARDS

Install vertically oriented ACRE sheets side by side, in a row, across the first level of your project.

Leave a 1/16" gap between sheets when installing.

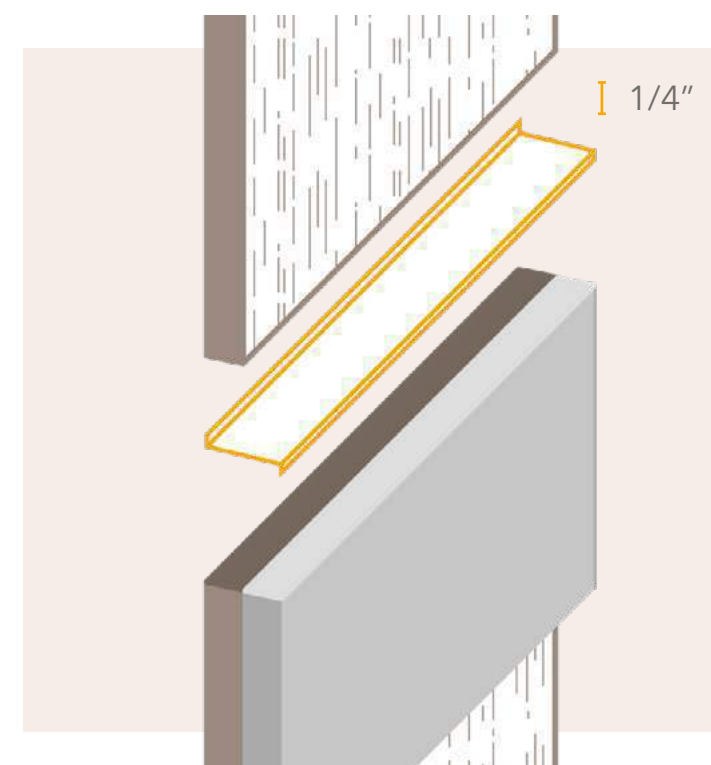
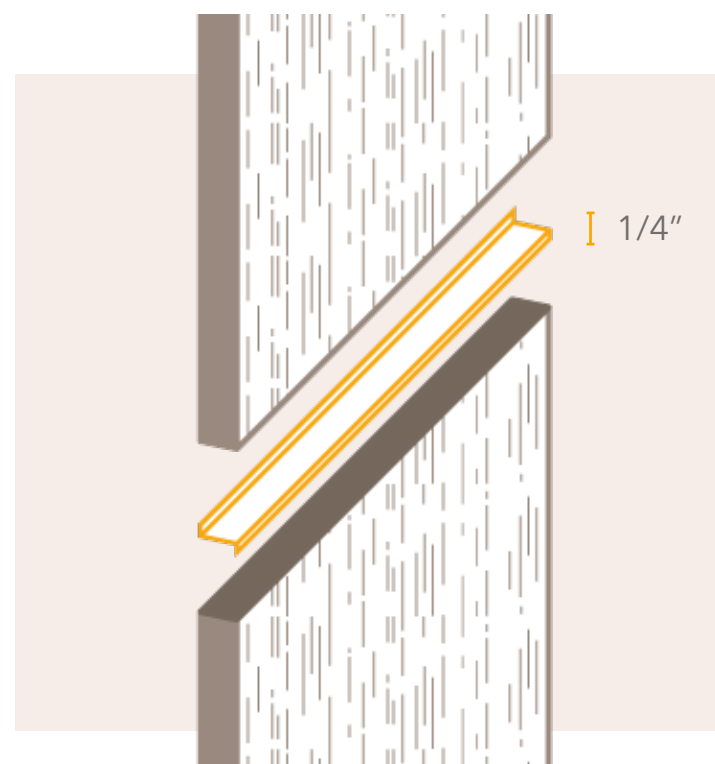
Fasten 1/2" from the edge, every 8 inches with a minimum of 1 1/2" by 0.092 hot dipped galvanized ring-shank siding nails.



Allow a 1/4" gap above windows. Do not caulk the gap above windows (to allow for drainage).

Leave a 1/8" gap in the sides and bottom of windows. This gap should be caulked against water leaks.

A second row of sheets should sit atop of the first row with appropriately sized Z flashing and a 1/4" gap that should not be caulked.

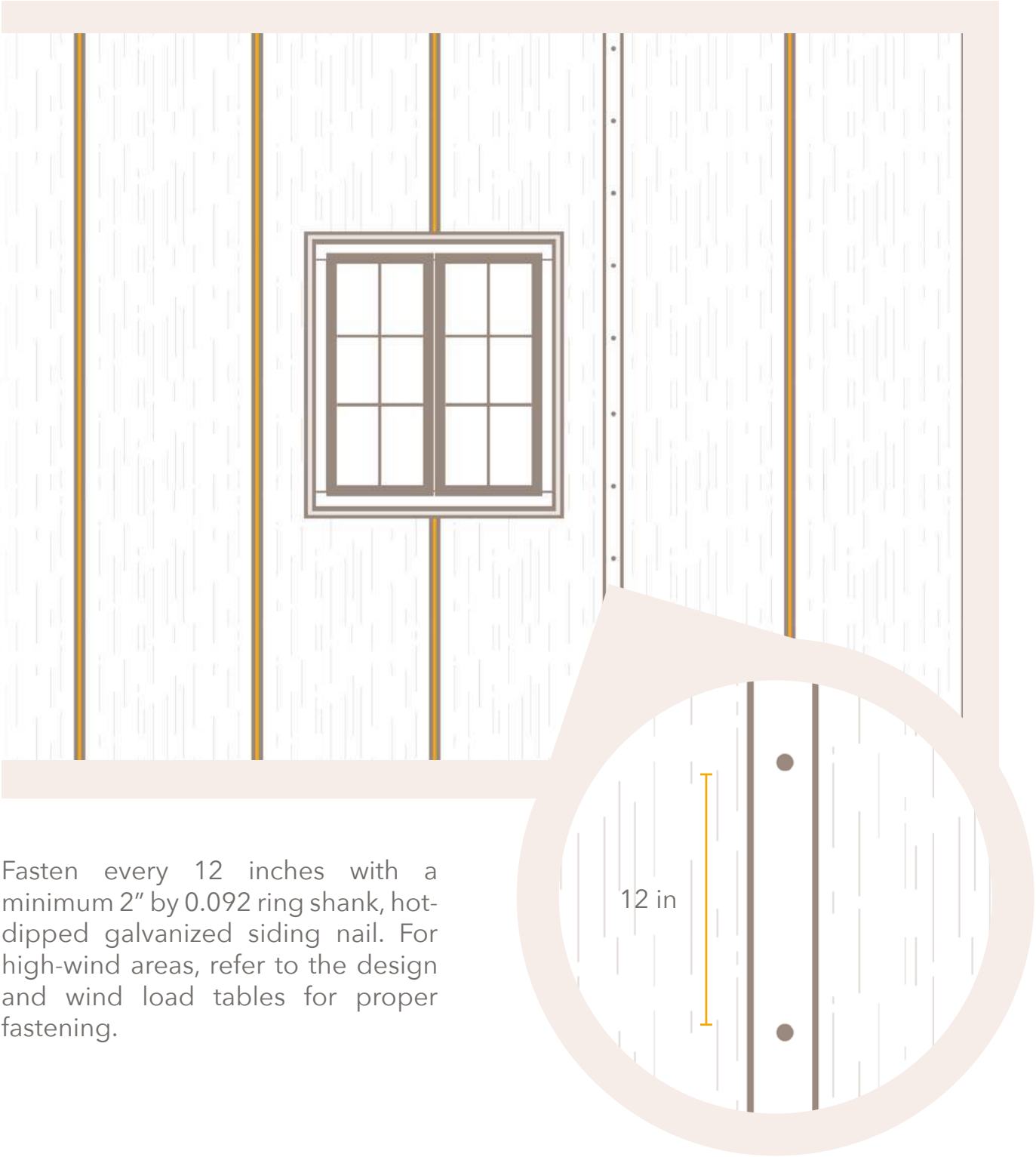


If you choose to use a band board across the top of this row, be sure to use the appropriate sized Z flashing and include a 1/4" gap when starting the second row.

Install the corner boards, the skirt board and the window trim.

After the installation of the trims, add a small bead of caulk above any horizontal trims that are overlaid on top of the sheets such as the window head trim and skirt board.

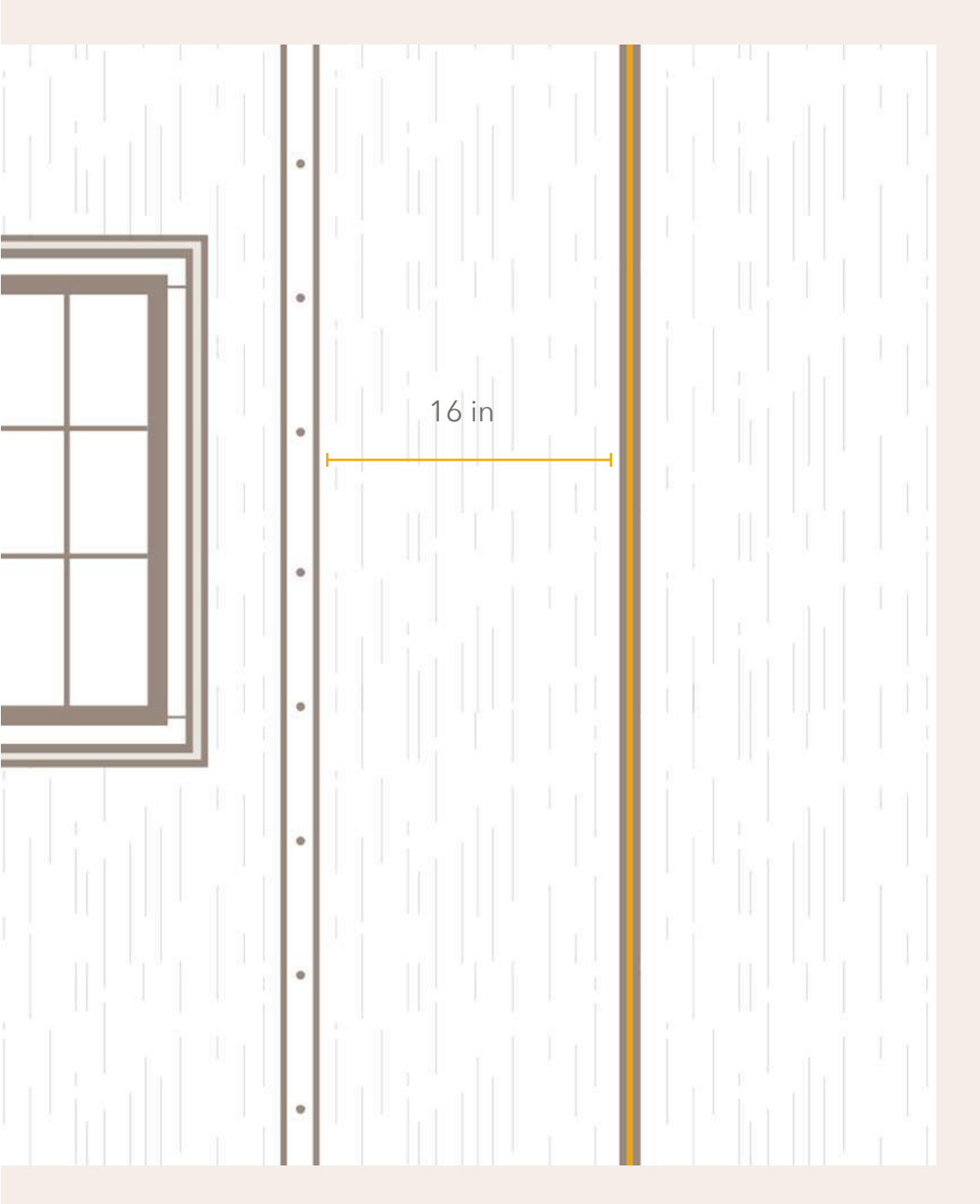
Now you can begin installing the battens over each seam.



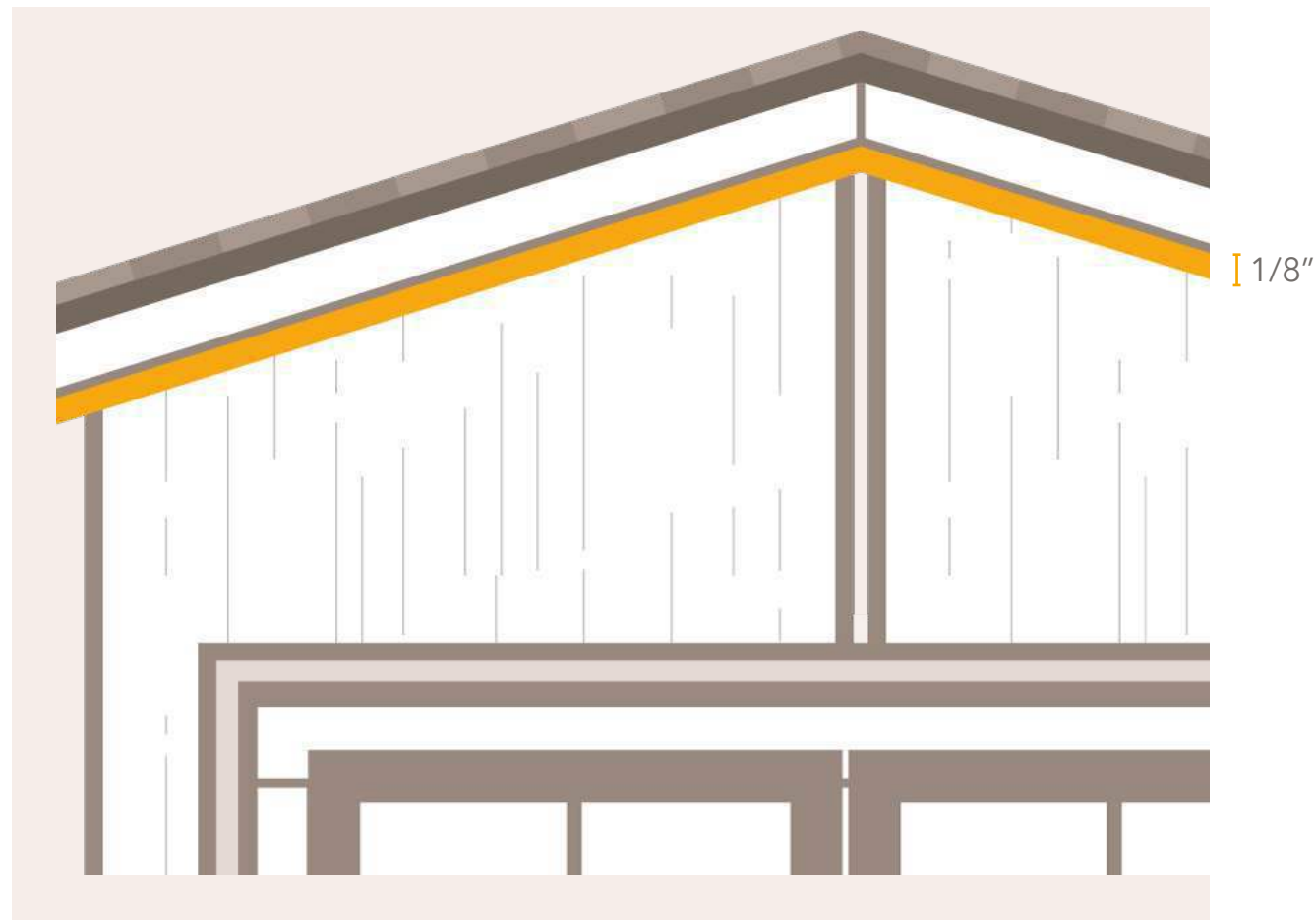
Fasten every 12 inches with a minimum 2" by 0.092 ring shank, hot-dipped galvanized siding nail. For high-wind areas, refer to the design and wind load tables for proper fastening.

Fill in battens between seams with the same process. For proper fastening, make sure battens are spaced no more than 16" apart.

Move up to the next course and install trim and battens as before.



For gable ends, install sheets about a 1/8" short of the soffit to allow movement and install rake trim to cover the gap. Battens follow below and you're done.



If you choose to skip the band board, extend the corners and battens to the top of the underlying sheets and make sure to use appropriate flashing. Do not bridge floors. Break trim and battens at the subfloor.

FINISH ACRE WITH WATER- BASED PAINT, STAIN OR SEALER.

If you choose to paint make sure the coating has a Light Reflective Value (LRV) above 55%. Apply coating on the ground prior to installing ACRE for best results.

See our website for approved coatings for darker colors and technical assistance.



WE'RE HERE TO HELP.

Call us at 503-360-9551, or write to us at sales@hdgbuildingmaterials.com for assistance.



BUILDING MATERIALS

www.hdgbuildingmaterials.com
503-360-9551



BUILDING MATERIALS

Providing Architects and Builders with
Superior Paving, Decking and Pedestal Products.

Commercial | Luxury Residential | Municipal

Extended Team

We can also provide technical consultation and installation training for projects that involve Buzon Pedestals. Please contact us to discuss your particular needs. HDG Building Materials also has a network of experienced installers in many major cities. Please contact us for introductions or referrals.

Sales Representatives

Sales Representatives
Sales representatives for HDG Building Materials are located in the Pacific Northwest, Southern California, and Iowa.

Outside of those regions? No problem, we are happy to serve. Please contact us at 503.360.9551



ACRE™ BY MODERN·MILL

HDG Building Materials is an authorized dealer for ACRE decking, siding, and large format sheets. HDG provides architectural sales and support in North America.

HDG Building Materials
Commercial | Luxury Residential | Municipal

5317 NW Goodwin Loop
Camas, WA 98607

503.360.9551

sales@hdgbuildingmaterials.com