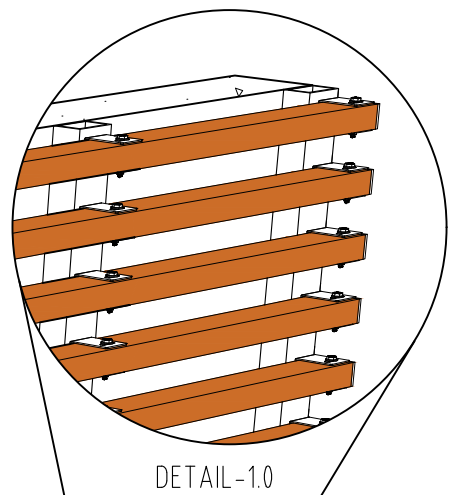
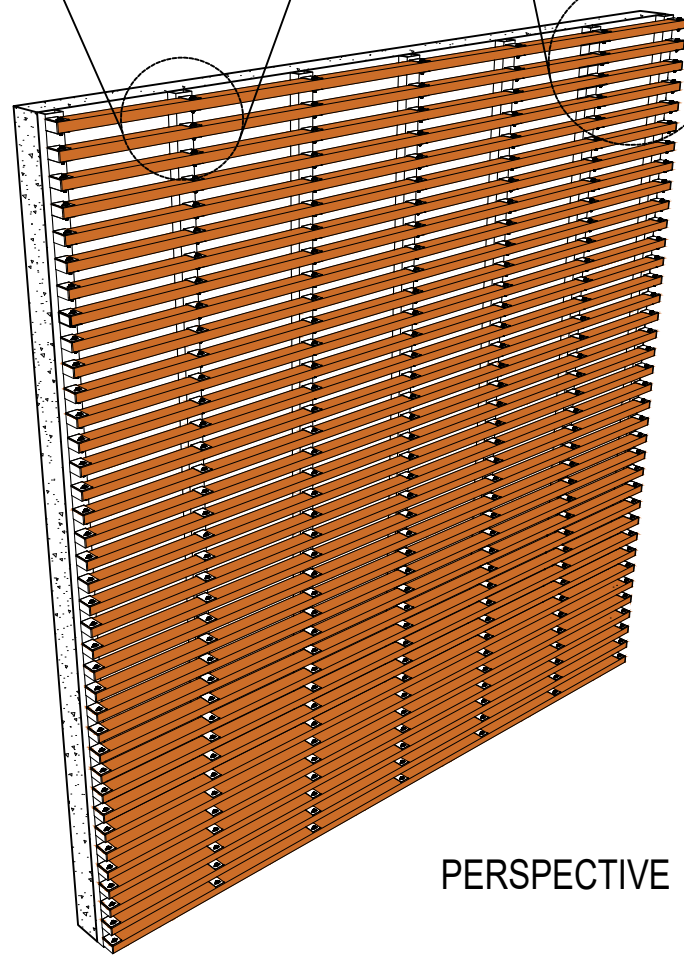


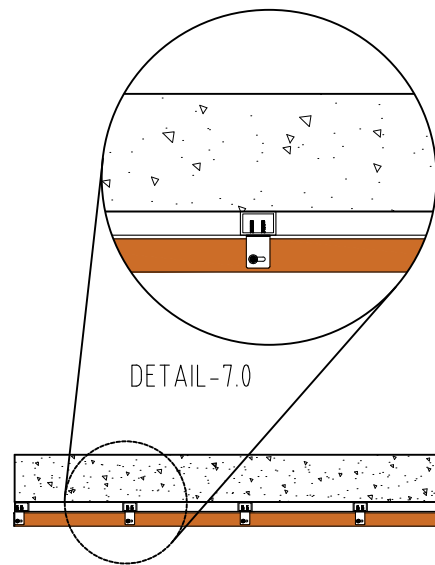
DETAIL-2.0



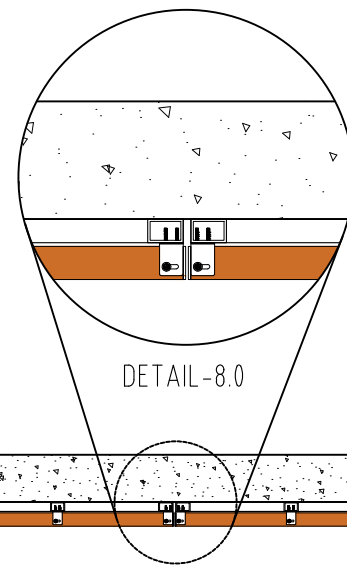
DETAIL-1.0



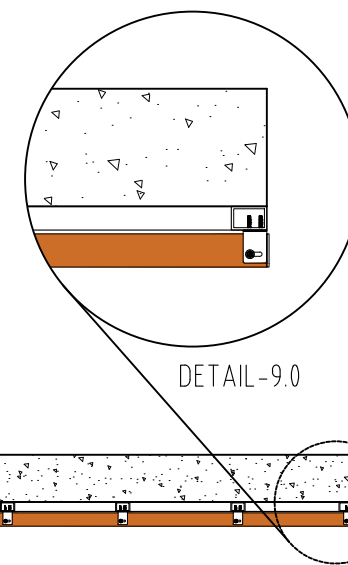
PERSPECTIVE



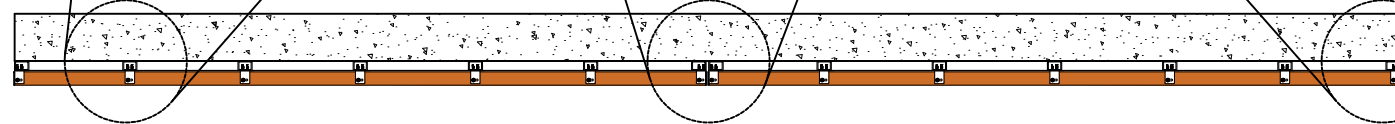
DETAIL-7.0



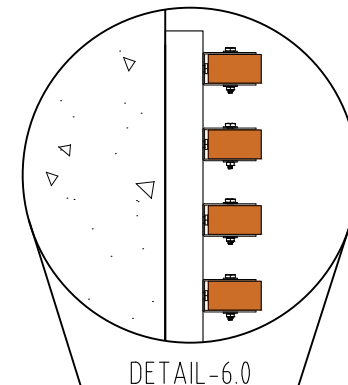
DETAIL-8.0



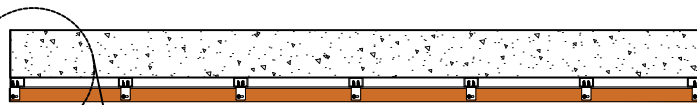
DETAIL-9.0



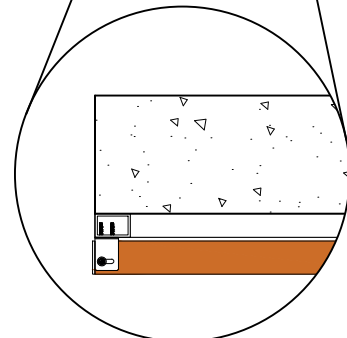
MULTI-BOARD TOP VIEW



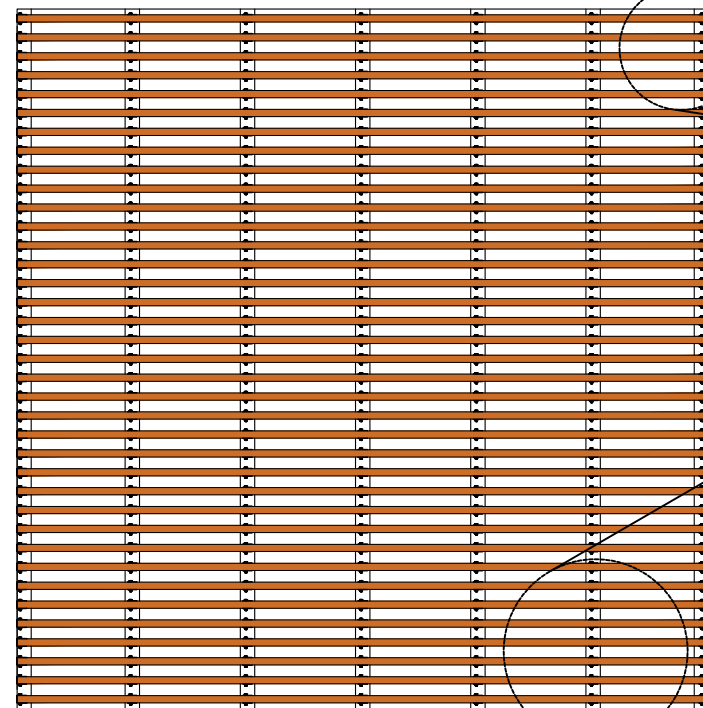
DETAIL-6.0



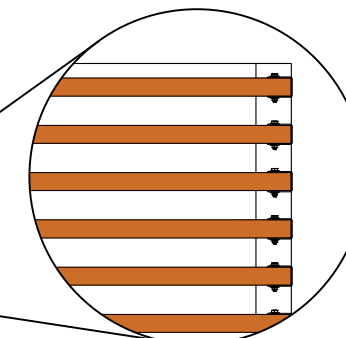
TOP VIEW



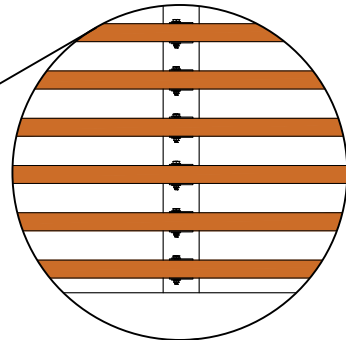
DETAIL-3.0



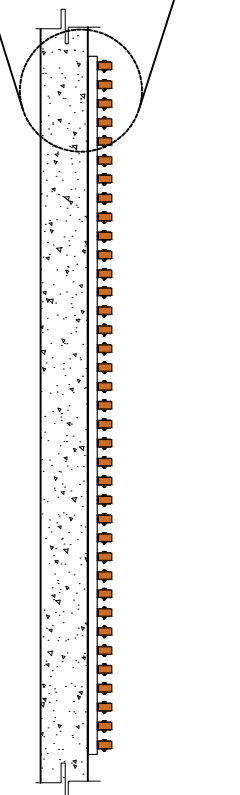
FRONT ELEVATION



DETAIL-4.0



DETAIL-5.0



SIDE ELEVATION

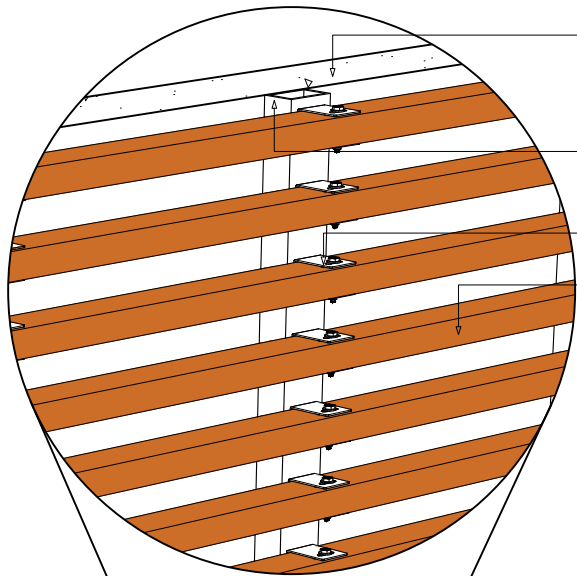
1  
2HCUB

## 2CH HORIZONTAL CLADDING U-BRACKET

RESYSTA PROFILE WITHOUT ALUMINUM INSERT (RESGC11223412)



CONTACT	TITLE	SPECIFICATION	SHEET CONTENT	SHEET SIZE	DRAWING NO.
PHONE: 503-360-9551  E-MAIL: sales@hdgbuildingmaterials.com  WEB: hdgbuildingmaterials.com	2CH - U Bracket HORIZONTAL CLADDING DETAIL	TYPICAL DRAWING DETAIL  CAD BY: _____ CHECKED BY: _____	PERSPECTIVE TOP VIEW FRONT ELEVATION SIDE ELEVATION MULTI-BOARD SIDE ELEVATION	A3  DATE: 27.02.23	2HCUB-1.1  REVISION: 0



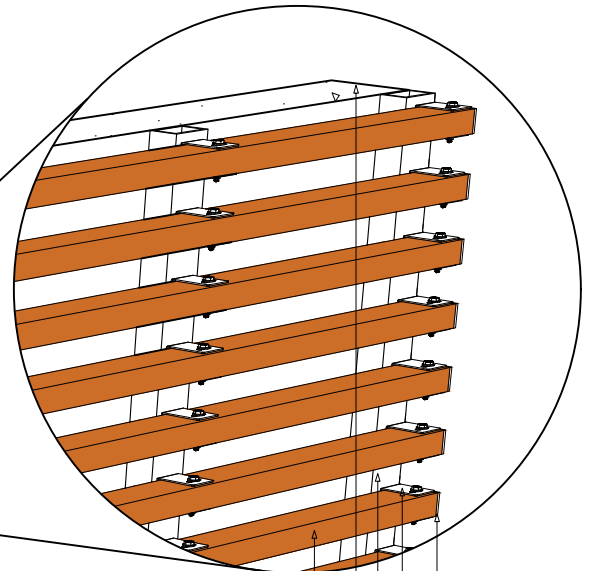
**DETAIL - 2.0**  
MIDDLE PART

EXISTING WALL

SUBSTRUCTURE BY OTHERS

RESUB112234 Aluminum U-Bracket with Bolt, washer and nut

RESGC11223412 Cladding (2CH)



**DETAIL - 1.0**  
END PART

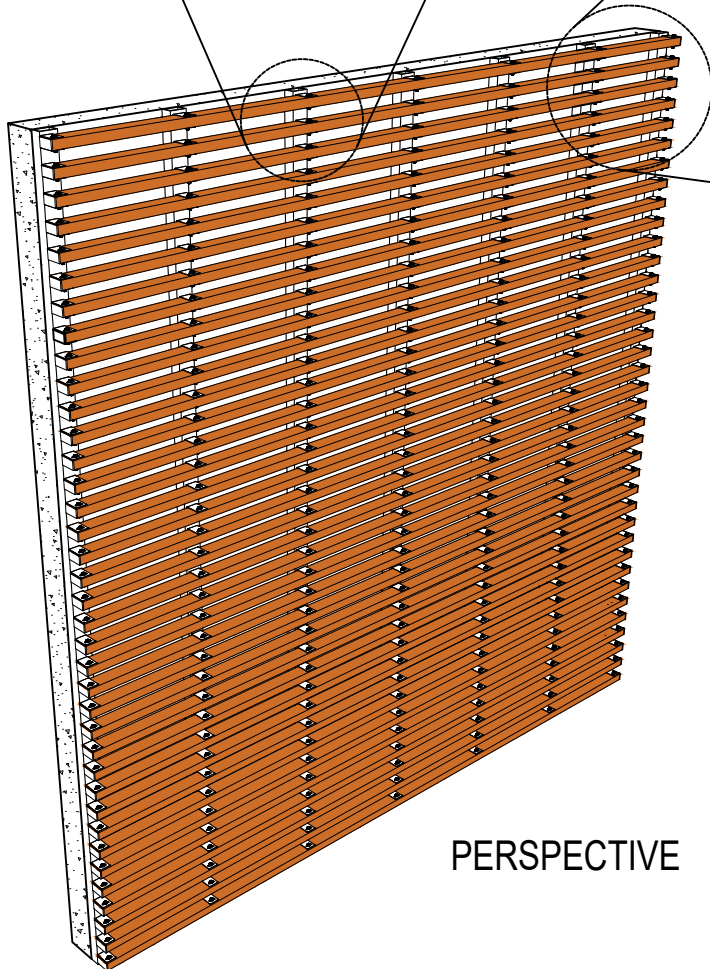
RESGC11223412  
Cladding (2CH)

EXISTING WALL

SUBSTRUCTURE BY OTHERS

RESUB112234 Aluminum  
U-Bracket with Bolt,  
washer and nut

RESCAP0206Cxx Hollow Cap



**PERSPECTIVE**

**SUB-DETAIL**  
**2HCUB 1.2**

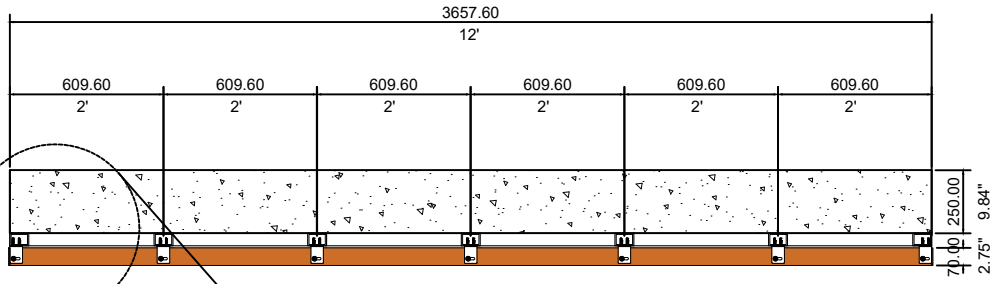
N.T.S

**DIMENSION LEGEND**

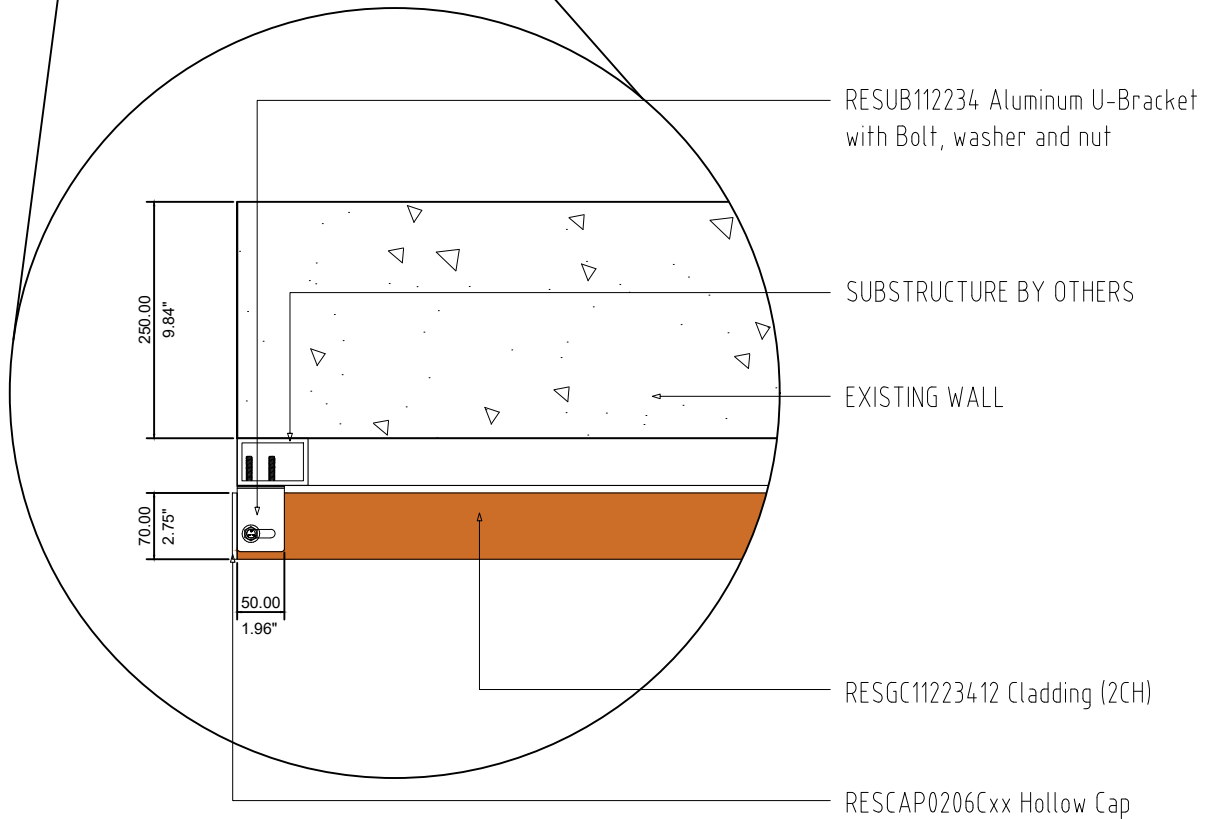
Millimeter (mm)
Inches (") / Foot (')



CONTACT	TITLE	SHEET CONTENT	
PHONE: 503-360-9551  E-MAIL: sales@hdgbuildingmaterials.com  WEB: hdgbuildingmaterials.com	2CH - U BRACKET <b>HORIZONTAL CLADDING</b> SUB-DETAIL	PERSPECTIVE	
		DETAIL -1.0	
		DETAIL -2.0	
	SPECIFICATION	DRAWING NO.	DATE
	TYPICAL DRAWING DETAIL	2HCUB-1.2	27.02.23
		CAD BY:	CHECKED BY:



TOP VIEW



DETAIL - 3.0

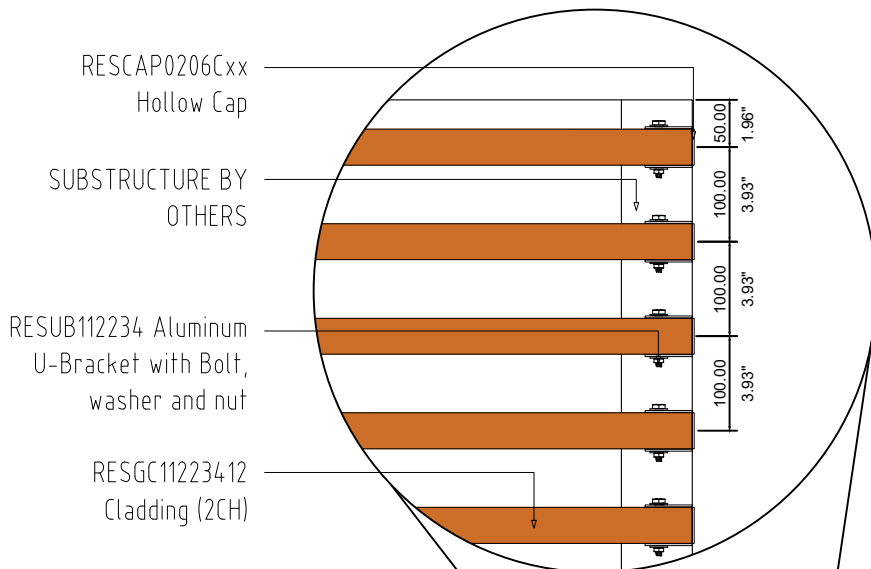
**SUB-DETAIL**  
2HCUB 1.3

N.T.S

DIMENSION LEGEND	
Millimeter (mm)	
Inches (") / Foot (')	



TITLE	SHEET CONTENT	
2CH - U BRACKET HORIZONTAL CLADDING SUB-DETAIL	TOP VIEW	
	DETAIL -3.0	
SPECIFICATION	DRAWING NO.	DATE
TYPICAL DRAWING DETAIL	2HCUB-13	27.02.23
	CAD BY:	CHECKED BY:



RESCAP0206Cxx  
Hollow Cap

SUBSTRUCTURE BY  
OTHERS

RESUB112234 Aluminum  
U-Bracket with Bolt,  
washer and nut

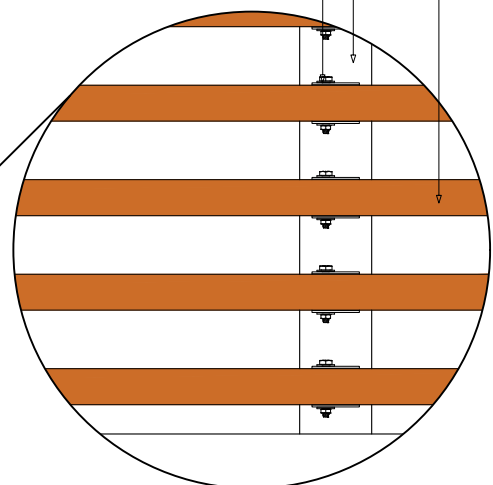
RESGC11223412  
Cladding (2CH)

**DETAIL - 4.0**

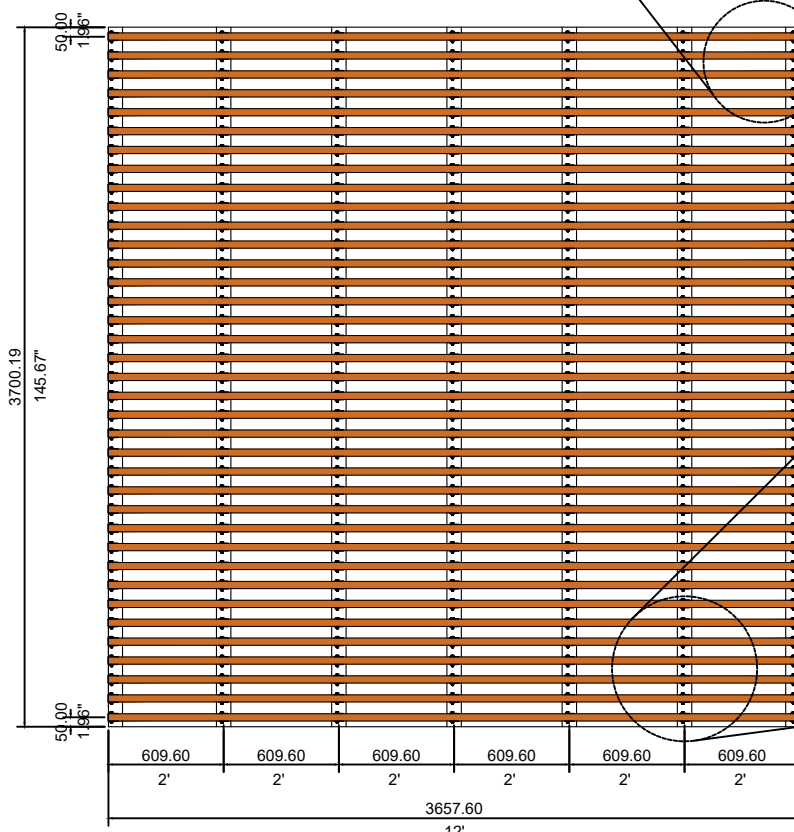
RESGC11223412  
Cladding (2CH)

SUBSTRUCTURE BY  
OTHERS

RESUB112234  
Aluminum U-Bracket  
with Bolt, washer  
and nut



**DETAIL - 5.0**



**FRONT ELEVATION**

**SUB-DETAIL**  
2HCUB 1.4

N.T.S

DIMENSION LEGEND	
Millimeter (mm)	
Inches (") / Foot (')	

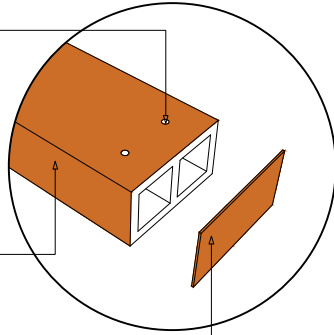


CONTACT	TITLE	SHEET CONTENT	
PHONE: 503-360-9551  E-MAIL: sales@hdgbuildingmaterials.com  WEB: hdgbuildingmaterials.com	2CH - U BRACKET <b>HORIZONTAL CLADDING</b> SUB-DETAIL	FRONT ELEVATION	
		DETAIL-4.0	
DETAIL-5.0			
	TYPICAL DRAWING DETAIL	DRAWING NO.	DATE
		2HCUB-1.4	27.02.23
		CAD BY:	CHECKED BY:

1/8" Diameter hole for every chamber for ventilation

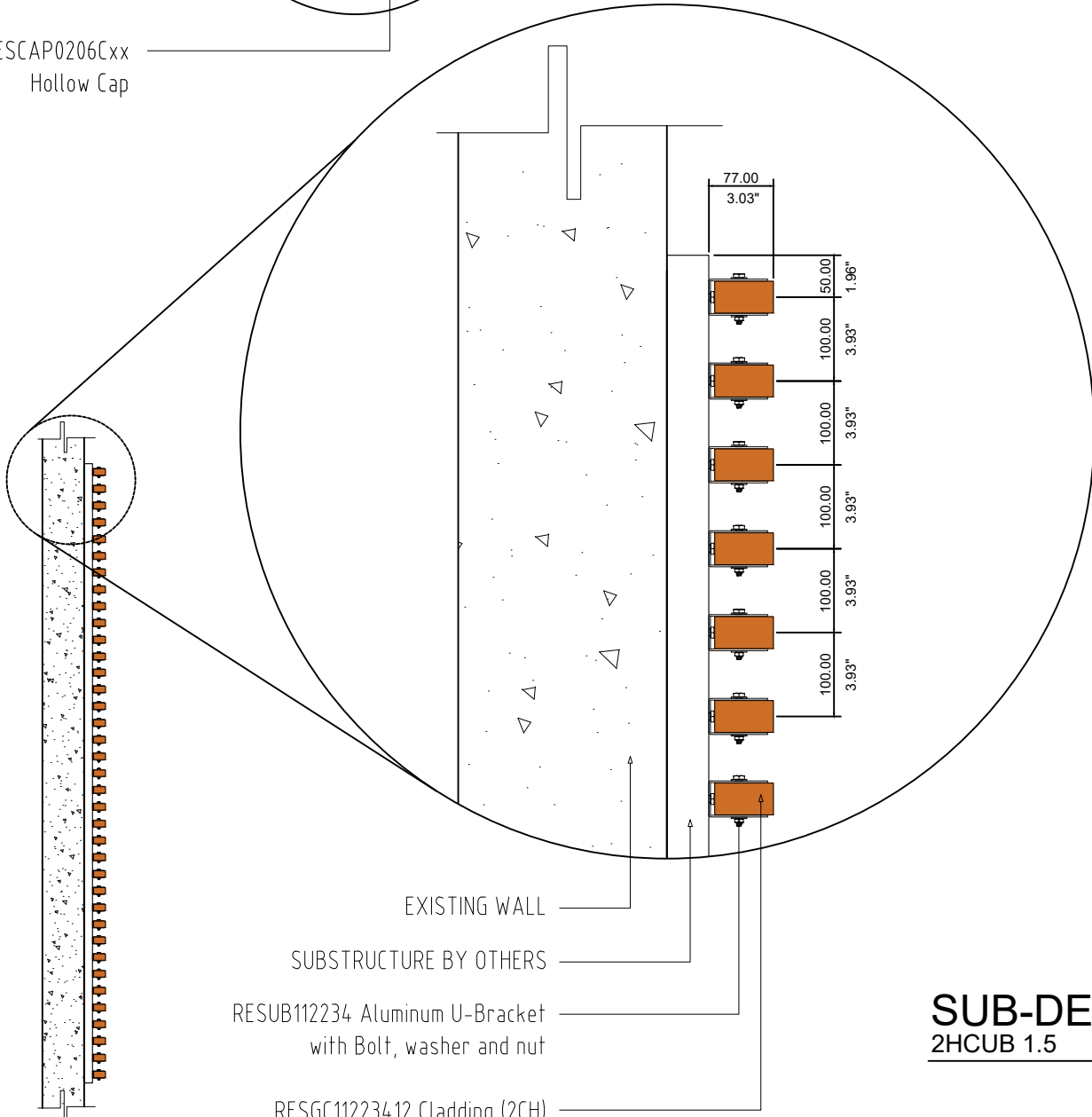
RESGC11223412 Cladding (2CH)

RESCAP0206Cxx Hollow Cap



**NOTE:**

If applying veneer caps to both ends of the RESGC11223412 you'll need to drill a 1/8" minimum diameter hole in every chamber to allow for ventilation. The location of the holes will depend on the Clients discretion based on the actual project conditions.



**SIDE ELEVATION**

**DETAIL - 6.0**

**SUB-DETAIL**  
**2HCUB 1.5**

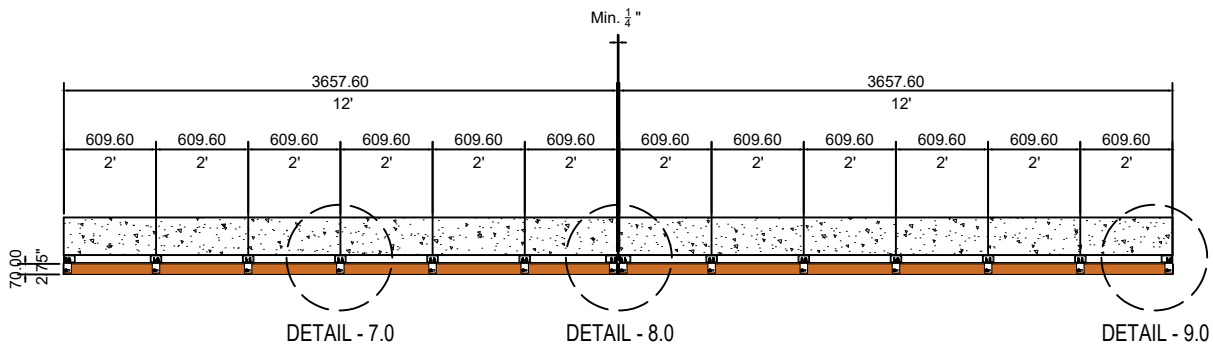
N.T.S

**DIMENSION LEGEND**

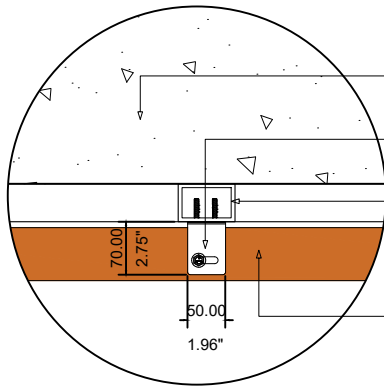
Millimeter (mm)
Inches (") / Foot (')



<b>CONTACT</b>	<b>TITLE</b>	<b>SHEET CONTENT</b>	
PHONE: 503-360-9551	2CH - U BRACKET HORIZONTAL CLADDING SUB-DETAIL	SIDE ELEVATION	
E-MAIL: sales@hdgbuildingmaterials.com		DETAIL-6.0	
WEB: hdgbuildingmaterials.com	<b>SPECIFICATION</b>	<b>DRAWING NO.</b>	<b>DATE</b>
	TYPICAL DRAWING DETAIL	2HCUB-15	27.02.23
		<b>CAD BY:</b>	<b>CHECKED BY:</b>

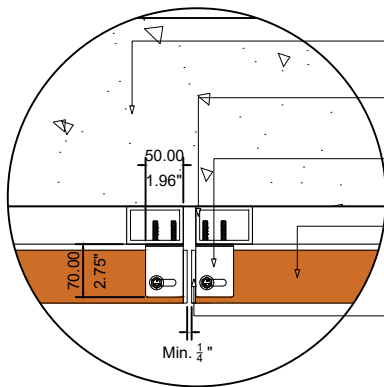


## MULTI-BOARD TOP VIEW



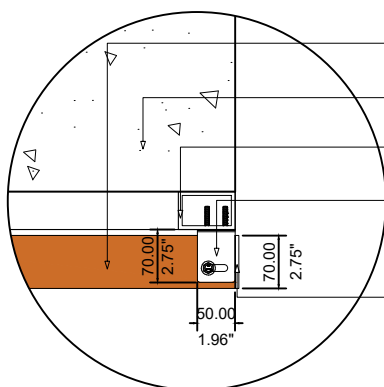
DETAIL - 7.0

- EXISTING WALL
- RESUB112234 Aluminum U-Bracket with Bolt, washer and nut
- SUBSTRUCTURE BY OTHERS
- RESGC112234.12 Cladding (2CH)



DETAIL - 8.0

- EXISTING WALL
- SUBSTRUCTURE BY OTHERS
- RESUB112234 Aluminum U-Bracket with Bolt, washer and nut
- RESGC112234.12 Cladding (2CH)
- RESCAP0206Cxx Hollow Cap



DETAIL - 9.0

- RESGC112234.12 Cladding (2CH)
- EXISTING WALL
- SUBSTRUCTURE BY OTHERS
- RESUB112234 Aluminum U-Bracket with Bolt, washer and nut
- RESCAP0206Cxx Hollow Cap

## SUB-DETAIL 2HCUB 1.6

N.T.S

DIMENSION LEGEND	
Millimeter (mm)	
Inches (") / Foot (')	



CONTACT	TITLE	SHEET CONTENT	
PHONE: 503-360-9551  E-MAIL: sales@hdgbuildingmaterials.com  WEB: hdgbuildingmaterials.com	2CH - U BRACKET <b>HORIZONTAL CLADDING</b> SUB-DETAIL	MULTI-BRD TOP VIEW	
		DETAIL-7.0	
		DETAIL-8.0	
		DETAIL-9.0	
	SPECIFICATION	DRAWING NO.	DATE
	TYPICAL DRAWING DETAIL	2HCUB-16	27.02.23
		CAD BY:	CHECKED BY: