

ISOMETRIC VIEW

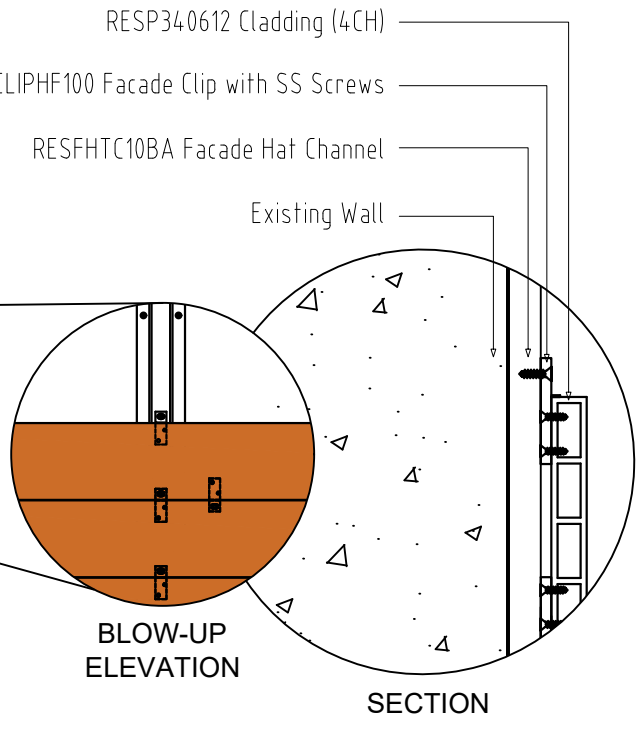
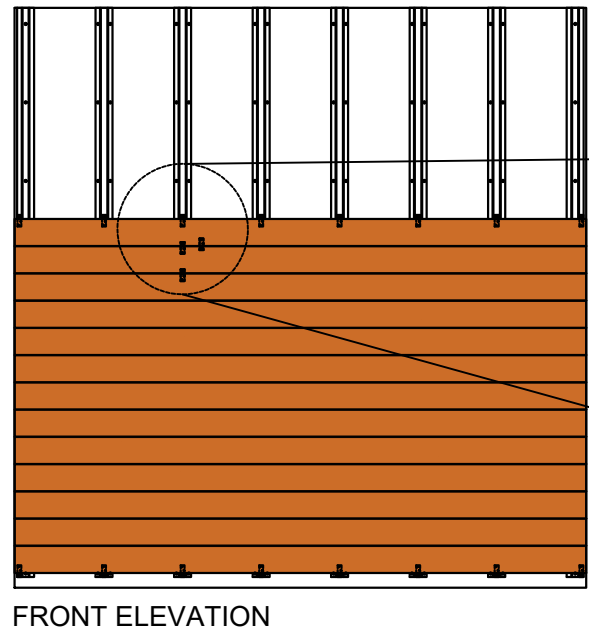
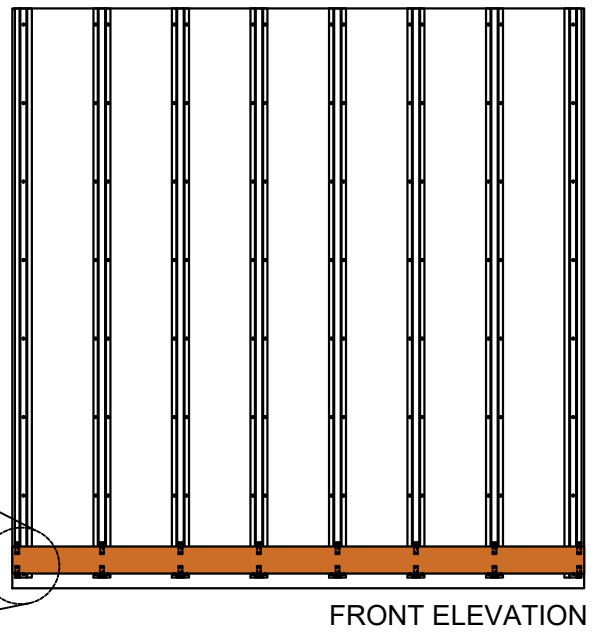
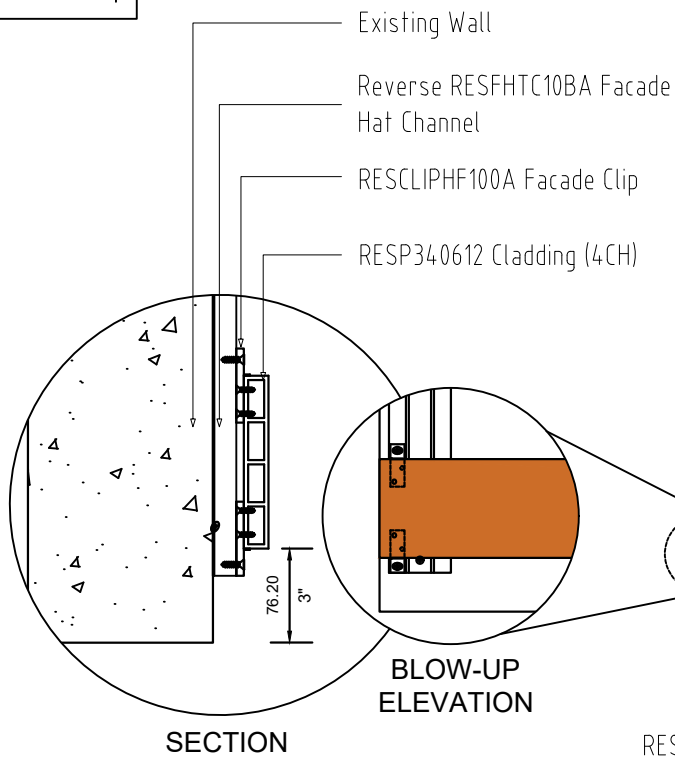
1 BUTT JOINT HORIZONTAL CLADDING DETAIL (BJHCD)

1
BJHCD-1



<p>CONTACT</p> <p>PHONE: 503-360-9551</p> <p>E-MAIL: sales@hdgbuildingmaterials.com</p> <p>WEB: hdgbuildingmaterials.com</p>	<p>TITLE</p> <p>BUTT JOINT HORIZONTAL CLADDING DETAIL</p>	<p>SPECIFICATION</p> <p>TYPICAL DRAWING DETAIL</p> <p>CAD BY: _____</p> <p>CHECKED BY: _____</p>	<p>SHEET CONTENT</p> <p>ISOMETRIC VIEW</p> <p>BLOW-UP DETAIL</p>	<p>SHEET SIZE</p> <p>A3</p> <p>DATE</p> <p>21.07.22</p>	<p>DRAWING NO.</p> <p>BJHCD-01</p> <p>REVISION</p> <p>0</p>
--	---	--	--	---	---

DIMENSION LEGEND
 Millimeter (mm)
 Inches (") / Foot (')



Note:
 Each HF Clip requires 3 screws. Two are #8 x 1/2" SMS screws to attach the Clip to the Resysta Wall Cladding board and one is to attach the wall cladding board with the clip to the battens.

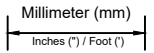
SUB-DETAIL
 BJHCD 1.1

S C A L E
 0 100 500 1000

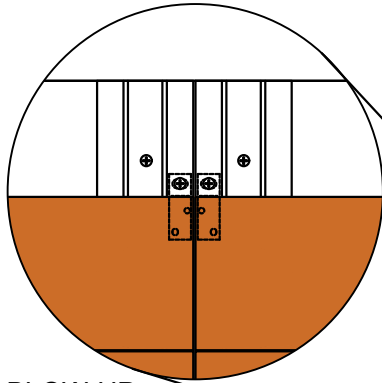


CONTACT PHONE: 503-360-9551 E-MAIL: sales@hdgbuildingmaterials.com WEB: hdgbuildingmaterials.com	TITLE BUTT JOINT HORIZONTAL CLADDING SUB-DETAIL	SHEET CONTENT ELEVATION BLOW-UP DETAIL SECTION	
	SPECIFICATION TYPICAL DRAWING DETAIL	DRAWING NO. BJHCD-02	DATE 21.07.22
		CAD BY:	CHECKED BY:

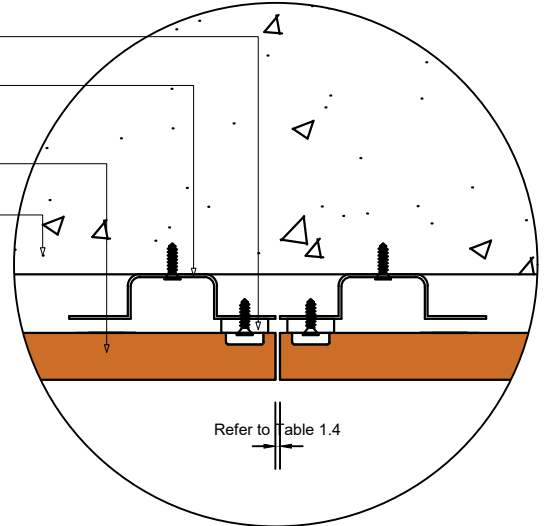
DIMENSION LEGEND



- RESCLIPHF100A Facade Clip
- Reverse RESFHTC10BA Facade Hat Channel
- RESP340612 Cladding (4CH)
- Existing Wall

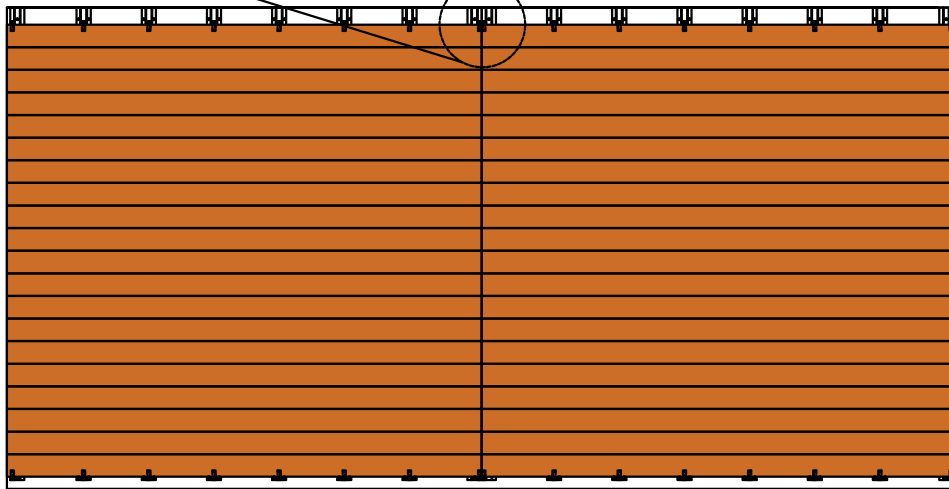


BLOW-UP ELEVATION



Refer to Table 1.4

TOP VIEW



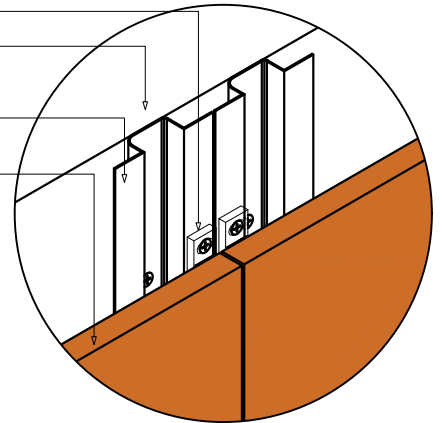
FRONT ELEVATION

SUB-DETAIL

BJHCD 1.2



- RESCLIPHF100A Facade Clip
- Existing Wall
- Reverse RESFHTC10BA Facade Hat Channel
- RESP340612 Cladding (4CH)



ISOMETRIC VIEW

Table 1.4 "Resysta Expansion"

Resysta Wall Cladding Board Gap Guide					
Temperature at Installation	Gap of Wall cladding Board				Multi Board Gap
	Below 30 0F	60 0F	90 0F	120 0F	
Amount for Wall cladding Profile - Length of 12 ft.	7/16"	5/16"	3/16"	0"	1/4"

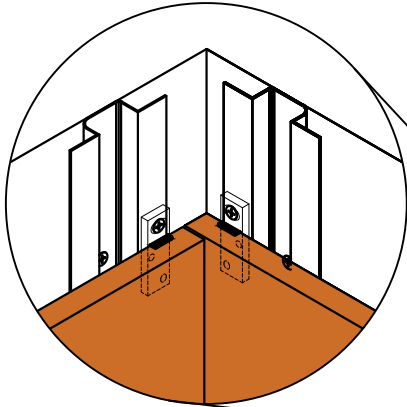
Note :

This is an option for installation using 3 or more boards abutted end-to-end. When connecting wall cladding boards at the ends, please consider Resysta Expansion.



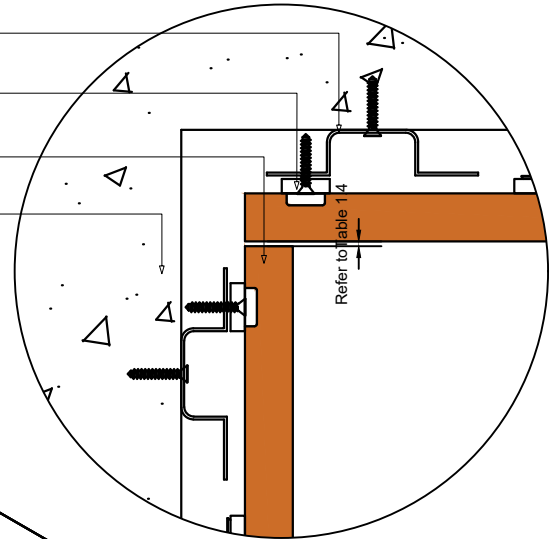
CONTACT PHONE: 503-360-9551 E-MAIL: sales@hdgbuildingmaterials.com WEB: hdgbuildingmaterials.com	TITLE BUTT JOINT HORIZONTAL CLADDING SUB-DETAIL	SHEET CONTENT ELEVATION BLOW-UP DETAIL TOP VIEW	
	SPECIFICATION TYPICAL DRAWING DETAIL	DRAWING NO. BJHCD-03	DATE 21.07.22

DIMENSION LEGEND
 Millimeter (mm)
 Inches (") / Foot (')

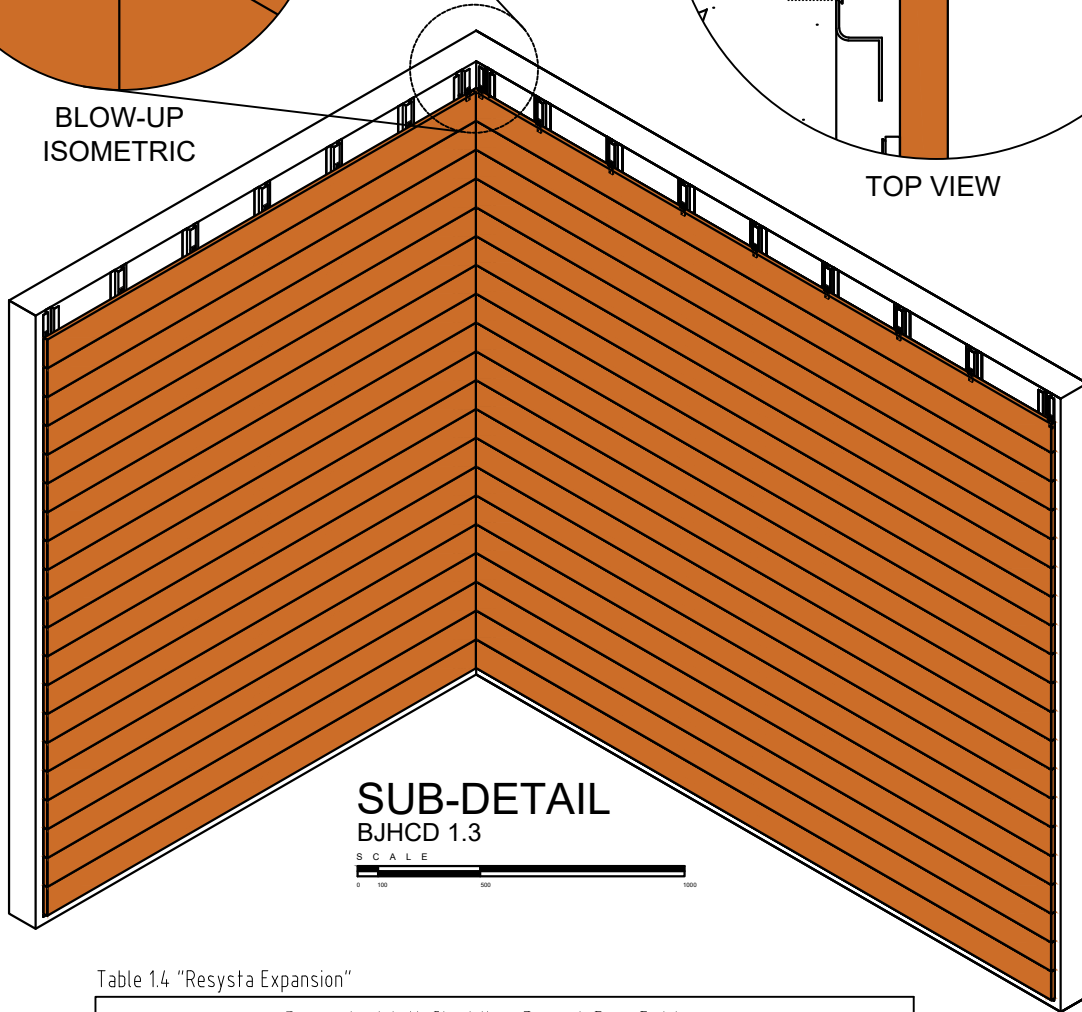


BLOW-UP ISOMETRIC

Reverse RESFHTC10BA
 Facade Hat Channel
 RESCLIPHF100A Facade Clip
 RESP340612 Cladding (4CH)
 Existing Wall



TOP VIEW



SUB-DETAIL
 BJHCD 1.3

SCALE
 0 100 500 1000

ISOMETRIC VIEW

Table 1.4 "Resysta Expansion"

Resysta Wall Cladding Board Gap Guide					
	Gap of Wall cladding Board				Multi Board Gap
Temperature at Installation	Below 30 OF	60 OF	90 OF	120 OF	
Amount for Wall cladding Profile - Length of 12 ft.	7/16"	5/16"	3/16"	0"	1/4"

Note :
 When connecting wall cladding boards at the ends, please consider Resysta Expansion.



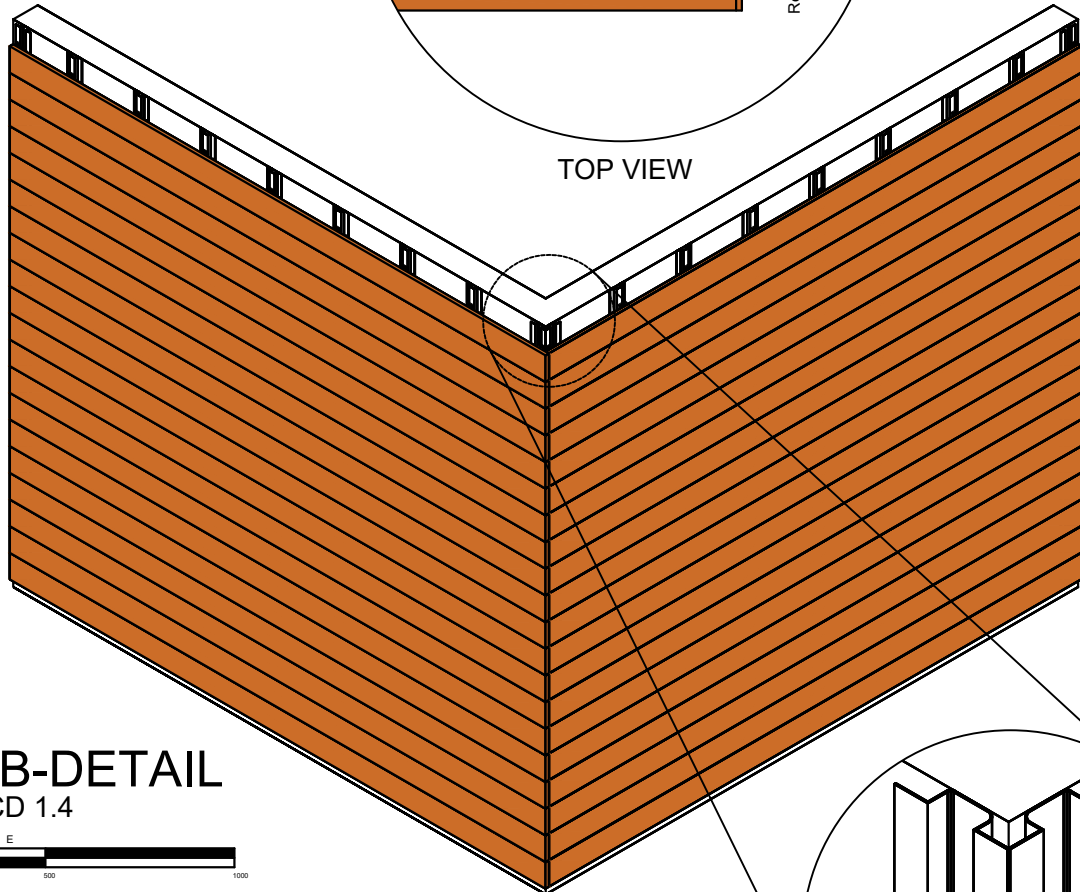
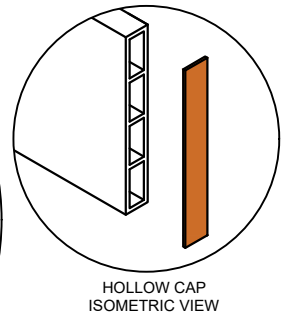
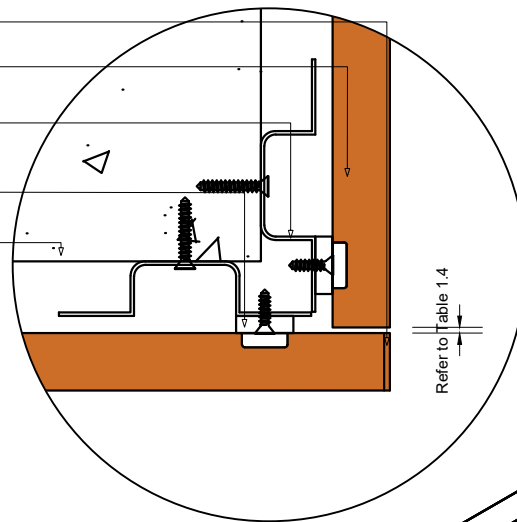
CONTACT	TITLE	SHEET CONTENT	
PHONE: 503-360-9551	BUTT JOINT HORIZONTAL CLADDING SUB-DETAIL	ISOMETRIC VIEW	
E-MAIL: sales@hdgbuildingmaterials.com		BLOW-UP DETAIL	
WEB: hdgbuildingmaterials.com	SPECIFICATION	TOP VIEW	
		DRAWING NO.	DATE
		BJHCD-04	21.07.22
	TYPICAL DRAWING DETAIL	CAD BY:	CHECKED BY:

DIMENSION LEGEND

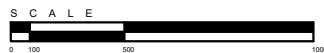
Millimeter (mm)

Inches (") / Foot (')

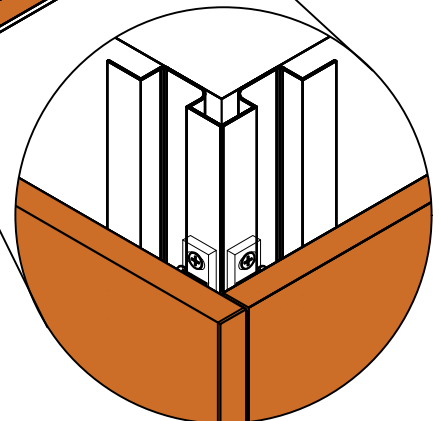
- Hollow Cap
- RESP340612 Cladding (4CH)
- Reverse RESFHTC10BA Facade Hat Channel
- RESCLIPHF100A Facade Clip
- Existing Wall



SUB-DETAIL
BJHCD 1.4



ISOMETRIC VIEW



BLOW-UP ISOMETRIC

Table 1.4 "Resysta Expansion"

Resysta Wall Cladding Board Gap Guide					
Temperature at Installation	Gap of Wall cladding Board				Multi Board Gap
	Below 30 OF	60 OF	90 OF	120 OF	
Amount for Wall cladding Profile - Length of 12 ft.	7/16"	5/16"	3/16"	0"	1/4"

Note :

Remove adhesive strip cover film. Center Hollow Cap on the end of the plank and apply with firm pressure all around the center supports.

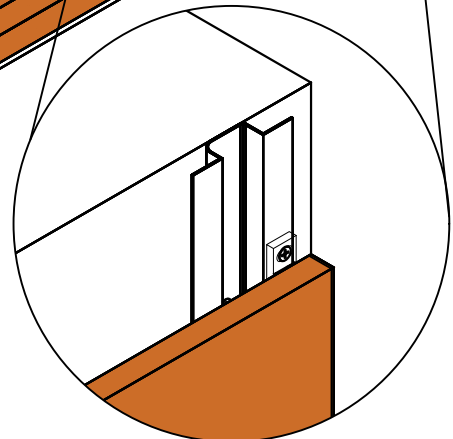
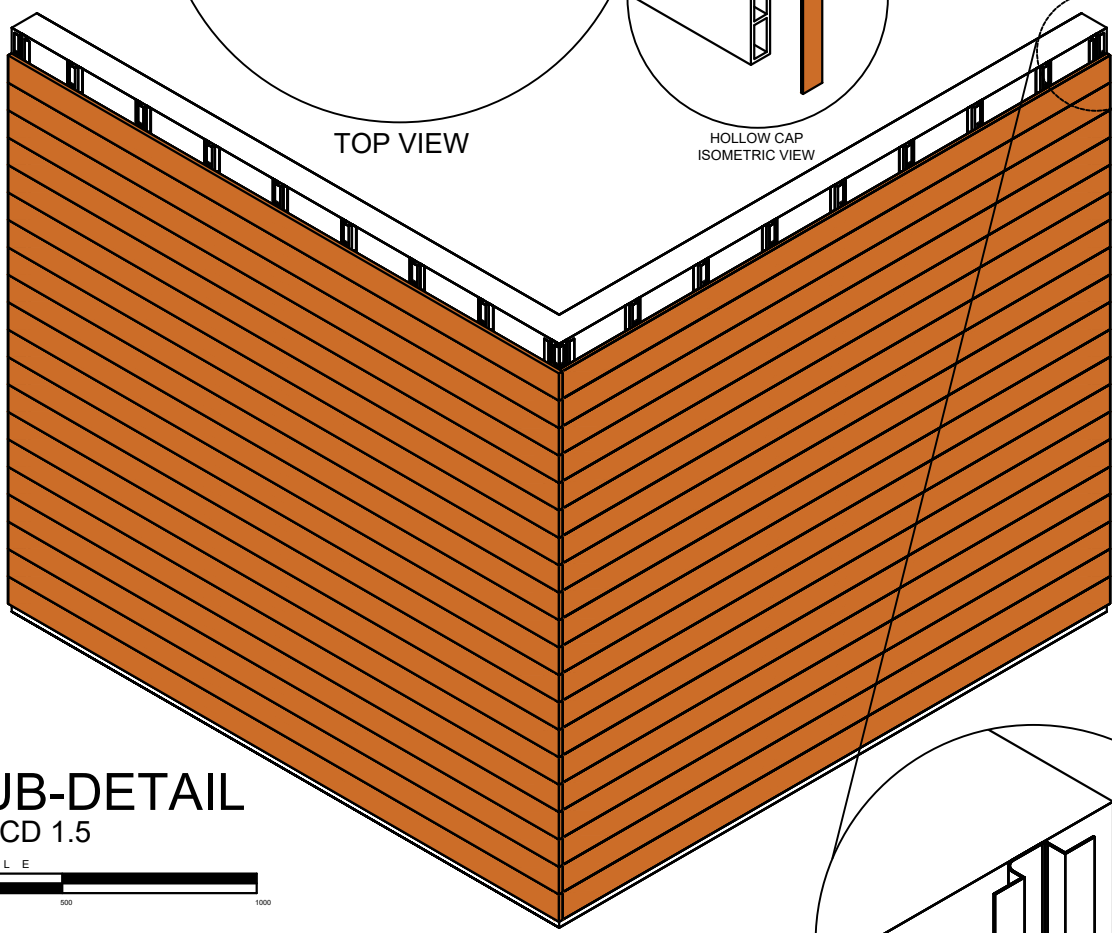
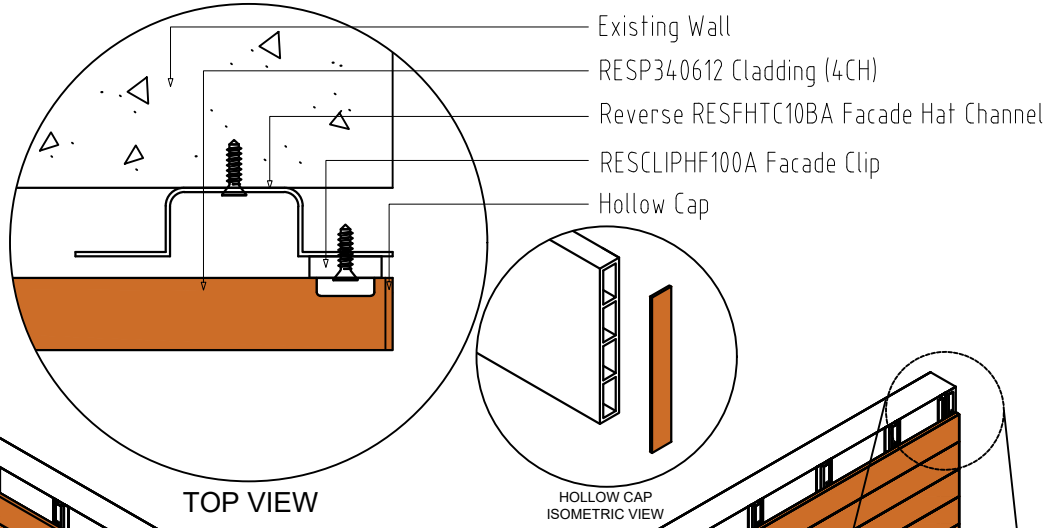


CONTACT PHONE: 503-360-9551 E-MAIL: sales@hdgbuildingmaterials.com WEB: hdgbuildingmaterials.com	TITLE BUTT JOINT HORIZONTAL CLADDING SUB-DETAIL	SHEET CONTENT ISOMETRIC VIEW BLOW-UP DETAIL TOP VIEW	
	SPECIFICATION TYPICAL DRAWING DETAIL	DRAWING NO. BJHCD-05	DATE 21.07.22
		CAD BY:	CHECKED BY:

DIMENSION LEGEND

Millimeter (mm)

Inches (") / Foot (')



SUB-DETAIL
BJHCD 1.5



ISOMETRIC VIEW

BLOW-UP ISOMETRIC

Table 1.4 "Resysta Expansion"

Resysta Wall Cladding Board Gap Guide					
Temperature at Installation	Gap of Wall cladding Board				Multi Board Gap
	Below 30 OF	60 OF	90 OF	120 OF	
Amount for Wall cladding Profile - Length of 12 ft.	7/16"	5/16"	3/16"	0"	1/4"

Note :
Be sure that all surfaces are clean and free of debris such as dust, dirt, oils and paints. Remove adhesive strip cover film. Center Hollow Cap on the end of the plank and apply with firm pressure all around the center supports.



CONTACT PHONE: 503-360-9551 E-MAIL: sales@hdgbuildingmaterials.com WEB: hdgbuildingmaterials.com	TITLE BUTT JOINT HORIZONTAL CLADDING SUB-DETAIL	SHEET CONTENT ISOMETRIC VIEW BLOW-UP DETAIL TOP VIEW	
	SPECIFICATION TYPICAL DRAWING DETAIL	DRAWING NO. BJHCD-06	DATE 21.07.22
		CAD BY:	CHECKED BY: